



QUICK GUIDE



Thank you

to our 2024 JSM Sponsors

PLATINUM



GOLD



SILVER



Find out more at ww2.amstat.org/meetings/jsm/2024/sponsors.



Explore the program via the official JSM 2024 mobile app!

Sponsored by 

Use the QR code or visit <http://bit.ly/4e4rQFv>



ASA 2024 Video Contest— No Experience Required!

Get ready to showcase your creativity and win big! The ASA wants to get to know you personally and gain perspective on topics that resonate with you. Using your cell phone, we challenge you to create a selfie video and address one of several contest prompts.

Our goal is to capture authentic and relatable experiences to share with our global community. And, in the digital age, what better way to foster a sense of connectedness under the “Big Tent” of statistics and data science than through the magic of video?

The contest will run August 4–6, and participation details are available at the ASA Membership Booth (#709). The lucky winner of a \$500 VISA gift card will be drawn at the booth at 4:00 p.m. PT Tuesday, August 6.



Scan the QR code or check out <https://bit.ly/3x1aOrl> for contest details, including the video prompts!



Follow [@AmstatNews](#) on social media and tag us using [#JSM2024](#).

Partner Societies

- *American Statistical Association
- Casualty Actuarial Society
- The Caucus for Women in Statistics and Data Science
- *International Biometric Society (ENAR and WNAR)
- International Chinese Statistical Association
- International Indian Statistical Association
- *Institute of Mathematical Statistics
- International Society for Bayesian Analysis
- International Statistical Institute
- Korean International Statistical Society
- Royal Statistical Society
- *Statistical Society of Canada
- Statistical Society of Australia

**Indicates the founding societies of JSM*

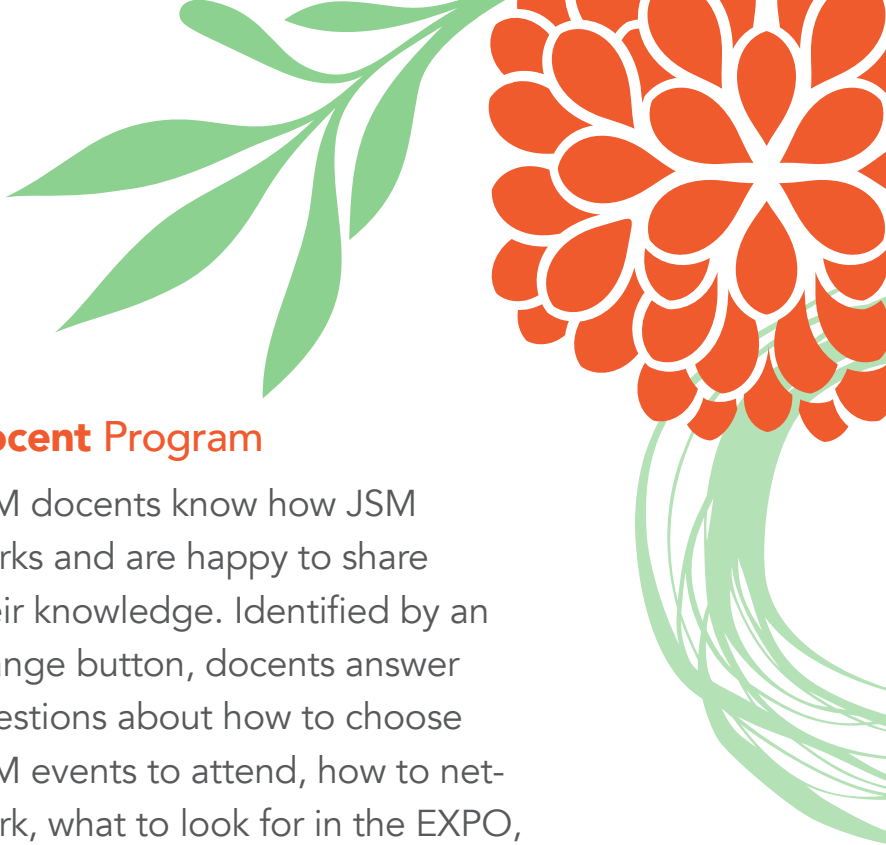


Together,
We Can
Create Better
Tomorrows

Join a team shaping the future
by unlocking incredible
possibilities for the world –
and for each other.

Visit us at
Booth #303
to learn more.





Docent Program

JSM docents know how JSM works and are happy to share their knowledge. Identified by an orange button, docents answer questions about how to choose JSM events to attend, how to network, what to look for in the EXPO, and how to have fun.



WI-FI Information

Sponsored by **abbvie**

Oregon Convention Center and Hyatt Regency

Network: JSM2024

Password: abbvie24

Portland Insider

If you have spare time, why not explore Portland? Take a peek at a few items to add to your agenda at <https://bit.ly/JSM204-local-info> or scan the QR code! You can also download a PDF from <https://bit.ly/4cCy7XC>.



JSM Proceedings

Eligibility guidelines and author instructions for JSM 2024 presenters are available at <https://bit.ly/4c3XwJk>. The submission site will be open August 12 – October 14 at 11:59 p.m. ET.



Good to Know

Emergency Telephone Messages



In case of emergency, messages may be left during registration hours by calling (503) 872-2151. We will attempt to contact the registrant using the contact information provided in their registration.

Accessibility and Inclusion

The American Statistical Association strives to foster accessible spaces during the Joint Statistical Meetings. Here's what's already part of our conference planning process:

- Keynote and plenary sessions have live captioning.

- Speakers use microphones for all sessions.
- Clearly marked reserved seating is at the front of every room.
- Clearly marked reserved seating is in every session room for wheelchairs/scooters.
- All conference facilities are accessible to wheelchair and scooter users.
- Elevators are marked, and staff can help identify elevators so you can navigate to your next session or meeting.
- Our hotel team works with attendees who need accommodations.
- Attendees have access to a nursing/lactation room.

Combine Your Expertise With Our Mission

Join a community that's committed to continual learning, keeping work and life in balance, and driving mission-critical decisions that keep our nation safe.

- Professional Training & Development
- Tuition Assistance
- 50+ Days Paid Time Off Per Year
- Flexible Work Schedules
- Innovation Pods



NSA
Careers

U.S. citizenship is required.
NSA is an Equal Opportunity Employer.

Apply now at IntelligenceCareers.gov/NSA



Good to Know

- There are gender-neutral restrooms.
- JSM provides a quiet reflection space for those in need of a place to pray or take a respite from conference activity.

Assistance for Those with Disabilities

Please contact a staff member at the Help Desk in the registration area if you have a disability that may impede your participation.

JSM Caregiver Grants

If you submitted a grant via the 2024 JSM Caregiver Grant application form by June 15 and need additional information about receiving a reimbursement, email meetings@amstat.org.



Please see ww2.amstat.org/meetings/jsm/2024/localinformation.cfm#caregivergrants or scan the QR code for local child care services and day camps.

Policies

Electronic Devices

All cell phones, pagers, and other electronic devices should be silenced before attending any session or meeting.

Smoking

Smoking is not permitted at any JSM function, unless the event is held outside.

Sustainability

The Oregon Convention Center is LEED® Platinum certified (US Green Building

Council's Leadership in Energy and Environmental Design), the highest level of certification. To achieve these accomplishments, facility leadership focused on innovation in the following areas:

- Enacting energy-reduction projects
- Diverting materials away from the landfill
- Prioritizing watershed stewardship
- Maintaining excellent indoor air quality
- Expanding community engagement
- Committing to sustainable purchasing
- Minimizing food waste and waste generation
- Prioritizing sustainable transportation

Please see www.oregoncc.org/en/about/sustainability for more information.

Activities Conduct Policy

As a professional society, the American Statistical Association is committed to providing an atmosphere that encourages the free expression and exchange of ideas. Consistent with this commitment, it is the policy of the ASA that all participants in ASA activities will enjoy a welcoming environment free from unlawful discrimination, harassment, and retaliation. All participants in ASA activities also agree to comply with all rules and conditions of the activities, which are subject to change without notice.

Please read the complete conduct policy at www.amstat.org/meetings/code-of-conduct or scan the QR code before attending.





Hours of Operation

Registration and ASA Membership/ Help Desk/ Press Desk

CC-Level 1, Prefunction C

Saturday

7:30 a.m. – 6:00 p.m.

Sunday

7:30 a.m. – 8:30 p.m.

Monday – Tuesday

7:30 a.m. – 6:00 p.m.

Wednesday

7:30 a.m. – 4:30 p.m.

Thursday

7:30 a.m. – 10:30 a.m.

Speaker Ready Room

Sponsored by AbbVie

CC-B115

Sunday

9:00 a.m. – 7:00 p.m.

Monday – Wednesday

7:00 a.m. – 6:00 p.m.

Thursday

7:00 a.m. – 10:30 a.m.

Career Service

CC-Hall B

Saturday

9:00 a.m. – 5:00 p.m.

Pre-registered attendee badge
pick-up and onsite registration

Sunday

1:00 p.m. – 6:00 p.m.

Monday – Tuesday

8:00 a.m. – 5:30 p.m.

Wednesday

8:00 a.m. – 2:30 p.m.

Registration closes at noon

EXPO 2024 and ASA Store

CC-Hall CD

Sunday

1:00 p.m. – 6:00 p.m.

8:30 p.m. – 10:30 p.m.

Monday – Tuesday

9:00 a.m. – 5:30 p.m.

Wednesday

9:00 a.m. – 2:30 p.m.

Travel Portland Restaurant & Tourism Information Center

CC-Level 1, Prefunction C

Sunday – Wednesday

10:00 a.m. – 5:00 p.m.

JSM Luggage Storage

CC-C126

Wednesday

8:00 a.m. – 6:30 p.m.

Thursday

8:00 a.m. – 1:00 p.m.

Quiet Reflection & Mindfulness Area

CC-C127

Sunday

7:30 a.m. – 10:30 p.m.

Monday – Wednesday

7:00 a.m. – 6:00 p.m.

Thursday

7:30 a.m. – 12:00 p.m.



Follow [@AmstatNews](#) on social media and tag us using [#JSM2024](#).

Featured Speakers

MONDAY AUGUST 5



MEDALLION LECTURE I

2:00 p.m.

CC-252

Annie Qu

Data Integration
for Heterogeneous Data



ASA PRESIDENT'S INVITED ADDRESS

4:00 p.m.

CC-201-203

Jason Matheny

Working at the Intersection
of Statistics and AI Policy



WI-FI Information

Sponsored by **abbvie**

**Oregon Convention Center
and Hyatt Regency**

Network: JSM2024

Password: abbvie24



Featured Speakers

TUESDAY AUGUST 6



IMS GRACE WAHBA LECTURE

10:30 a.m.
CC-252

Nancy Reid

Models and Parameters:
Inference Under Model
Misspecification



COPSS ELIZABETH L. SCOTT LECTURE

2:00 p.m.
CC-255

Regina Liu

Fusion Learning: Combining
Inferences from Diverse Data
Sources



MEDALLION LECTURE II

2:00 p.m.
CC-256

Jing Lei

Uncertainty Quantification
with Nonparametric and
Black-Box Models



DEMING LECTURE

4:00 p.m.
CC-201–203

William H. Woodall

Innovation: Deming's Views
and the Role of Statistics



ASA PRESIDENT'S ADDRESS

8:00 p.m.
CC-201–203

**Madhumita (Bonnie)
Ghosh-Dastidar**

Informing Policy and Countering
Misinformation



Featured Speakers

WEDNESDAY AUGUST 7



MEDALLION LECTURE III

2:00 p.m.

CC-251

Alicia Carriquiry

Statistics and Its Application
in Forensic Science and the
Criminal Justice System



COPSS DISTINGUISHED ACHIEVEMENT AWARD AND LECTURESHIP

4:00 p.m.

CC-201–203

Robert Tibshirani

Pre-Training and the Lasso



Portland Insider

Check out cool spots like the Peninsula Park Rose Garden in Portland's Piedmont neighborhood! Take a peek at a few other places to add to your agenda at <https://bit.ly/JSM204-local-info> or scan the QR code! You can also download a PDF from <https://bit.ly/4cCy7XC>.



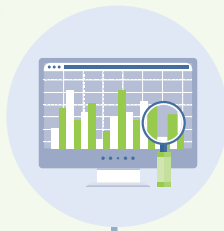
Students:

THE ASA HAS YOU **COVERED!**

Student
CHAPTERS



Travel Fund
FOR CONFERENCES



ASA JobWeb
FOR CAREERS



DataFest
CELEBRATIONS

Mentoring
PROGRAMS

Learn more about ASA membership and join today!



Visit www.amstat.org/membership or scan the QR code for more information.

11 | **CC** = Oregon Convention Center (777 NE Martin Luther King Jr. Blvd.)
H = Hyatt Regency at Oregon Convention Center (375 NE Holladay Street)

Introductory Overview Lectures

Sunday, August 4, 4:00 p.m.

CC-256

The Statistical Challenges of Modern Biological Data

Monday, August 5

8:30 a.m.

CC-251

Quantum Computing for Statisticians

Tuesday, August 6, 8:30 a.m.

CC-251

Statistics and Large Language Models

Tuesday, August 6, 10:30 a.m.

CC-256

Program Evaluation

Wednesday, August 7, 8:30 a.m.

CC-251

The US Federal Statistical System: Why We're Here,
What We Do, Who We Are, and Career Opportunities

Late-Breaking Sessions

Monday, August 5, 2:00 p.m.

CC-256

Statistics in the Age of AI: A Town Hall
with an Expert Panel

Tuesday, August 6, 10:30 a.m.

CC-251

Dealing with the Challenges of Data Collection
in the Context of Recent Conflicts



**JSM
DOCENT
AND HERE
TO HELP!**

Docent Program

JSM docents know how JSM works and are happy to share their knowledge. Identified by an orange button, docents answer questions about how to choose JSM events to attend, how to network, what to look for in the EXPO, and how to have fun.



Follow **@AmstatNews** on social media
and tag us using **#JSM2024**.

Special Events



JSM First-Time Attendee Orientation and Reception

Sunday, August 4

12:30 p.m. – 1:30 p.m.

CC-204

Join fellow first-timers at this orientation reception and learn how to get involved in JSM.

JSM Opening Mixer & Invited Poster Session

Sponsored by Eli Lilly & Company and Westat

Sunday, August 4

8:30 p.m. – 10:30 p.m.

CC-Hall CD

All conference attendees are encouraged to come together for the kick-off social event of JSM.



JSM Student Mixer

Sponsored by Two Sigma

Monday, August 5

6:00 p.m. – 8:00 p.m.

CC-204

The Student Mixer provides an opportunity for students to join their contemporaries for a fun-filled time.



ASA President's Address and Awards

Tuesday, August 6

8:00 p.m. – 9:30 p.m.

CC-201-203

This special event focuses on the state of statistics and data science, introduces new fellows, and gives attendees the chance to celebrate their colleagues.



JSM Dance Party

Tuesday, August 6

9:30 p.m. – 12:00 a.m.

CC-204

A fun highlight of JSM, the dance party is held right after the ASA President's Address and Awards. There are snacks, a cash bar, and music!

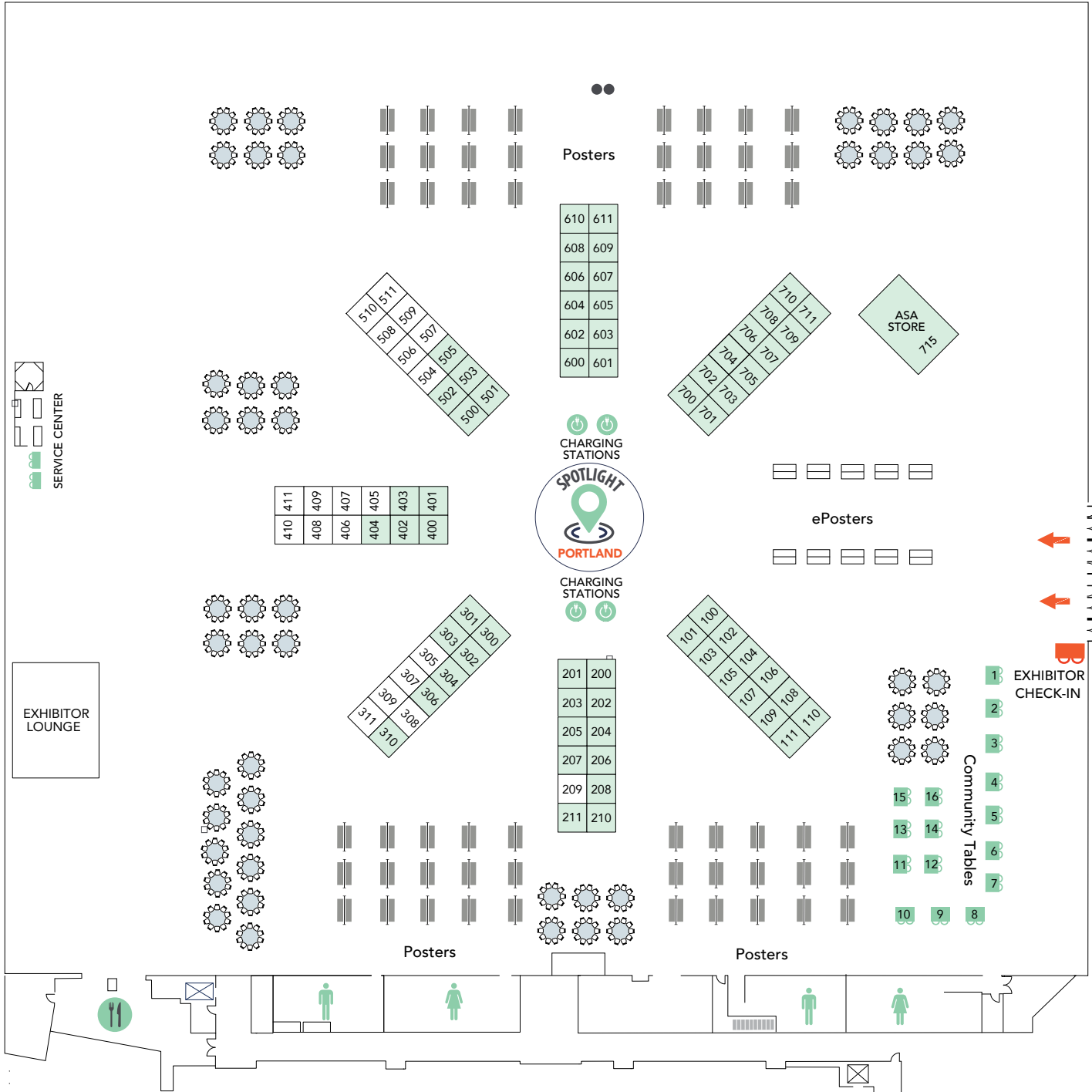
JSM EXPO

The JSM EXPO is a focal point for learning about, networking with, and celebrating the statistical community.

- Speak with leading companies showcased on the exhibit floor.
- Visit an interactive poster session.
- Take advantage of publisher discounts.
- Pick up swag.
- Stop by the ASA Store.
- Get a charge at the charging stations.
- Swing by the JSM 2025 booth and learn about Nashville, Tennessee.
- Grab a bite to eat.
- Look for treats in the JSM Spotlight.

EXPO Halls C&D

Don't miss the ASA Store • Charging Stations • JSM 2025 Booth • JSM Spotlight • Concessions



Accurate as of June 23; see the JSM app for updates.

Exhibitors

The JSM EXPO is a focal point for learning about, networking with, and celebrating the statistical community.

AAAS Science and Technology Policy Fellowships.....702	International Christian Statisticians..... Community Table 3	SAS.....100, 102
America’s DataHub Consortium.....207	International Indian Statistical Association..... Community Table 9	Section on Statistics and Data Science EducationCommunity Table 11
American Statistical Association.....709, 711	International Statistical Institute402	Springer Nature.....400
ASA GivesBack.. Community Table 4	IPUMS at the University of Minnesota208	StataCorp 104, 106, 108, 110
ASA Statistical Consulting Section Community Table 12	JMP Statistical Discovery701, 703	Statistical Society of Canada.....706
ASA Store 715	JSM 2025 Nashville.....707	Statistics in Defense and National Security Section Community Table 14
Astrostatistics Interest Group Community Table 7	Justice, Equity, Diversity, and Inclusion Outreach Group Community Table 5	Taylor & Francis401
Berry Consultants.....101	Korean International Statistical Society..... Community Table 1	Teaching of Statistics in the Health Sciences Section..... Community Table 8
Bureau of Justice Statistics.....109	LGBTQ+ Advocacy Committee Community Table 10	The Lotus Group300
Bureau of Labor Statistics404	Mayo Clinic Dept. of Quantitative Health Sciences.....607	University of Florida Dept. of Biostatistics103
Bureau of Transportation Statistics111	Mayo Clinic Kern Center.....700	University of Kansas Dept. of Biostatistics & Data Science ...704
Cambridge University Press601, 603	Merck.....200	University of Pittsburgh Dept. of Biostatistics.....503
Cantabular.....609	Minitab201	US Census Bureau.....705
Caucus for Women in Statistics and Data Science.....Community Table 16	National Center for Education Statistics, AIR.....604	Vertex Pharmaceuticals.....611
CDC Statistical Advisory Group610	National Center for Health Statistics, CDC.....608	Washington University in St. Louis.....602
Center for Statistical Science, Peking University.....105	National Center for Science and Engineering Statistics.....203	Western North American Region of the International Biometric Society..... Community Table 6
CIMS Global.....502	National Institute of Statistical Sciences Community Table 2	
Cytel505	National Science Foundation.....304, 306	
Daiichi Sankyo.....303	National Security Agency - Additional Badge.....302	
Edwards Lifesciences211	NCSS Statistical Software403	
EFFEX.....202	Pacific Northwest National Laboratory210	
FDA, Center for Drug Evaluation & Research606	Penfield Search Partners500	
Five Rings.....710	Penn State University107	
Genentech605	Phamalex.....310	
History of Statistics Interest Group Community Table 15	Plat AI.....301	
Institute for Mathematical and Statistical Innovation501	Realtime CRO600	
Institute of Mathematical Statistics708	Sandia National Laboratories.....206	

EXPO Hours

Sunday, August 4

1:00 p.m. – 6:00 p.m.

8:30 p.m. – 10:30 p.m. (Opening Mixer)

Monday, August 5

9:00 a.m. – 5:30 p.m.

Tuesday, August 6

9:00 a.m. – 5:30 p.m.

Wednesday, August 7

9:00 a.m. – 2:30 p.m.



JSM Spotlight

Where is the best place to grab refreshments or a treat and network with other attendees? You know it! It's the JSM Spotlight inside the EXPO. Take a break from sessions and enjoy refreshments while making new connections. There is something new and fun to try every day.

Sunday, August 4

1:00 p.m.
Spotlight Kick-Off

Swing by and kick off JSM with local Oregon delights. Grab a tasty treat while getting the first look at the JSM EXPO.

3:30 p.m.
Blue Star Donuts

While taking a turn around the EXPO, stop by for a taste of Portland's famous Blue Star Donuts. Choose from party bites (signature vanilla cake with cinnamon and all-natural sprinkles), orange dreamsicle, and chocolate truffle. You'll never believe they are vegan!



Monday, August 5



10:00 a.m.
JSM Coffee House

Refresh with a cup of freshly brewed coffee from Portland coffee roasters or a selection of teas.

1:30 p.m.
Popcorn Break

Enjoy a warm bag of popcorn for an afternoon pick-me-up.

3:30 p.m.
Microbrew Tasting

Stop by to taste a variety of area microbrews and cider (while supplies last).



Tuesday, August 6

10:00 a.m.
JSM Coffee House

Come by for another cup of fresh, hot coffee from Portland coffee roasters or tea.



1:30 p.m.
Popcorn Break

Who doesn't love the smell of popcorn? Follow your nose to JSM Spotlight for a bag of yum and let it perk up your afternoon.

3:30 p.m.
Sample Area Wines

Don't have time to visit the Willamette Valley while in Portland? We got you. Try tasting pours of red and white from local wineries (while supplies last).



Wednesday, August 7

10:00 a.m.
JSM Coffee House

It's been an intense few days. You need to refresh with a hot cup of coffee from Portland coffee roasters or tea.

Eating Options

Looking for coffee, lunch, or a snack? There are options available throughout the Oregon Convention Center lobbies and hallways. And be sure to check out the options available inside the EXPO! You can grab a bite while checking out the cutting-edge companies showcased on the exhibit floor, chatting up representatives from a variety of statistical communities, and learning about new research presented during JSM poster sessions.

Professional Development



Continuing education is a fundamental component of the professional life of statisticians. The Professional Development program at JSM offers more than 40 short courses and workshops about topics such as big data, clinical trials, statistical computing, and soft skills. Titles, instructors, descriptions, and schedules are available in the JSM app and online program.

All courses and workshops are at the **Oregon Convention Center**. To add one (for an additional fee), go to the Registration Desk on Level 1, Prefunction C, in the convention center.



Roundtables

Looking for something to do for breakfast or lunch? Try a roundtable and enjoy a bite to eat and a less formal presentation while meeting new people. Breakfast roundtables cost \$25, while lunch roundtables cost \$50.

Look through the options in the JSM online program or app and check with the JSM Registration Desk for availability.

Additionally, there are the following four Speaker with Lunch (\$50) sessions to choose from:



Sunday, August 4, 12:30 p.m. – 1:50 p.m.

SPAIG Lunchtime Speaker

Advantages to Cooperative Educational Experiences in Data Science Applications

Luke Larsen, US Census Bureau



Monday, August 5, 12:30 p.m. – 1:50 p.m.

Section on Statistics in Sports Speaker with Lunch

Sports Analytics, Data Science, Data Visualization, and Life

Brian Macdonald, Yale University



Tuesday, August 6, 12:30 p.m. – 1:50 p.m.

Economic Outlook Luncheon

Let's Standardize Our Way to Better Economic Data

Erica Groshen, Cornell, ILR School



Wednesday, August 7, 12:30 p.m. – 1:50 p.m.

Health Policy Statistics Section Speaker with Lunch

Survey Protocols, Response Rates, and Representation of Underserved Patients: A Randomized Clinical Trial

Marc Elliot, RAND

Career Service

Would you like to explore career opportunities with top statistical employers? The JSM Career Service, located in Hall B of the convention center, gives you the opportunity to research job postings and contact employers. Access is for registered applicants only, and interviews are by appointment, so make sure to register today and get started. Just visit the Registration Desk and ask to add the Career Service to your registration.

Sign up by visiting the JSM Registration Desk and asking to add the Career Service to your registration.

Fees

ASA Student Member \$50
 Student Nonmember \$75
 ASA Member \$100
 Nonmember \$150

Employers

Executive Suites



Pacific Northwest
National Laboratory



Edwards Life Sciences
 Five Rings
 Internal Revenue Service
 Institute for Defense Analyses
 Pacific Northwest National Laboratory
 Stevens Capital Management LP
 Westat

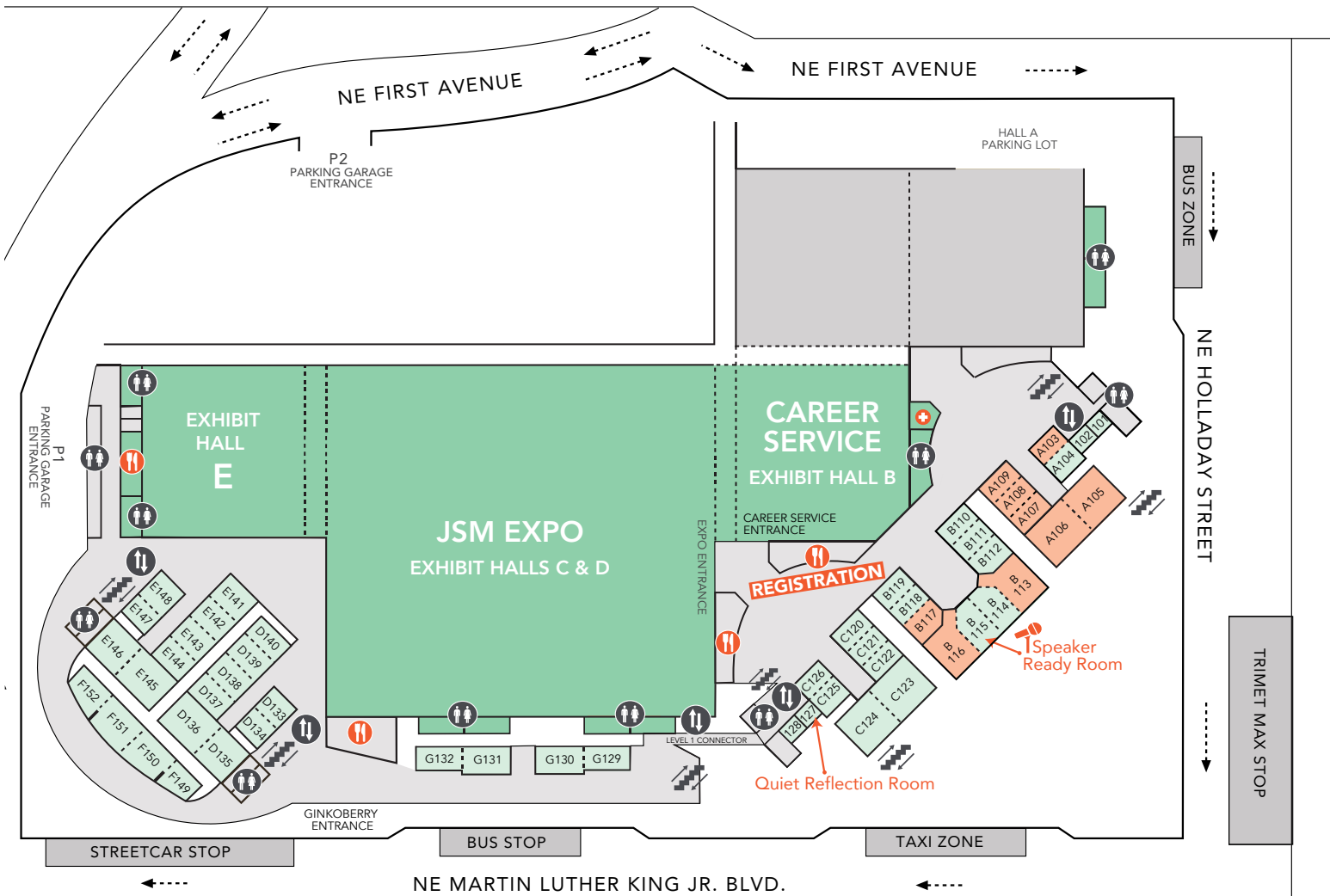
ONLINE ONLY

- FDA, Center for Drug Evaluation and Research (CDER)+
 - QuantCo+
 - National Security Agency+
- + will not interview onsite

Accurate as of June 11; see the JSM app for updates.

OREGON CONVENTION CENTER

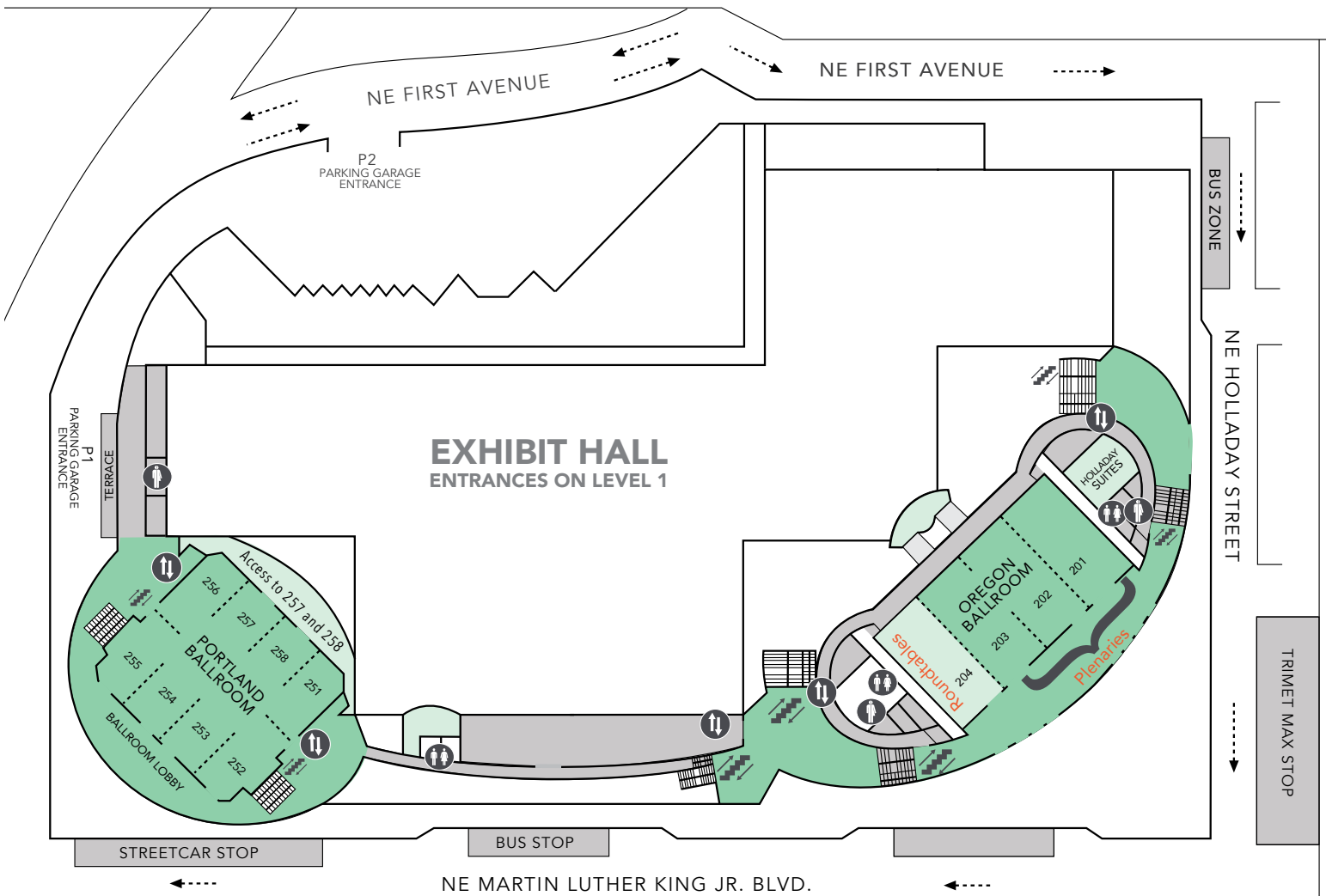
LEVEL 1



KEY	

OREGON CONVENTION CENTER

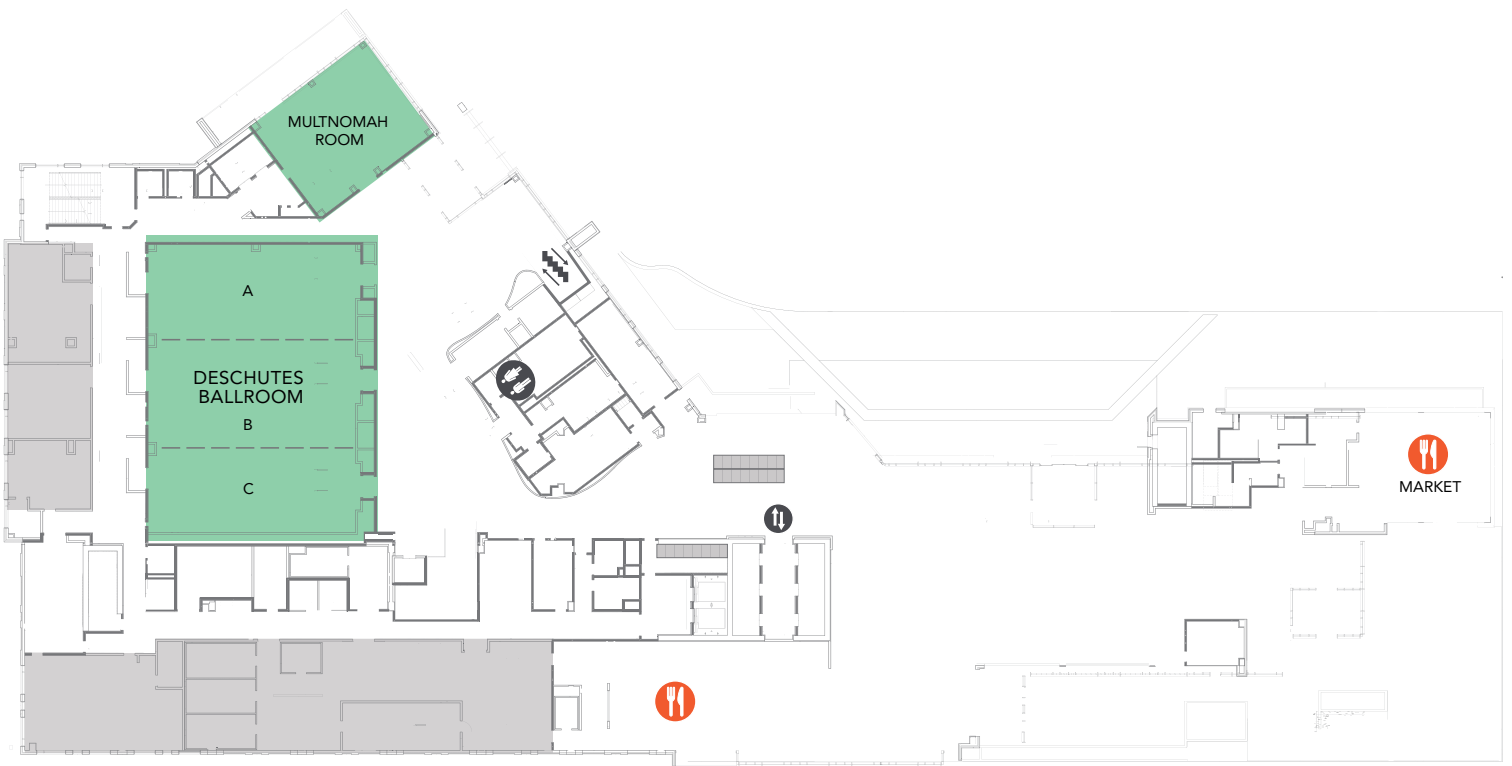
LEVEL 2



KEY	
	All-Gender Restrooms
	Restrooms
	First Aid
	Elevator
	Escalator
	Stairs
	Professional Development
	Concessions

HYATT REGENCY PORTLAND AT THE OREGON CONVENTION CENTER

LEVEL 1

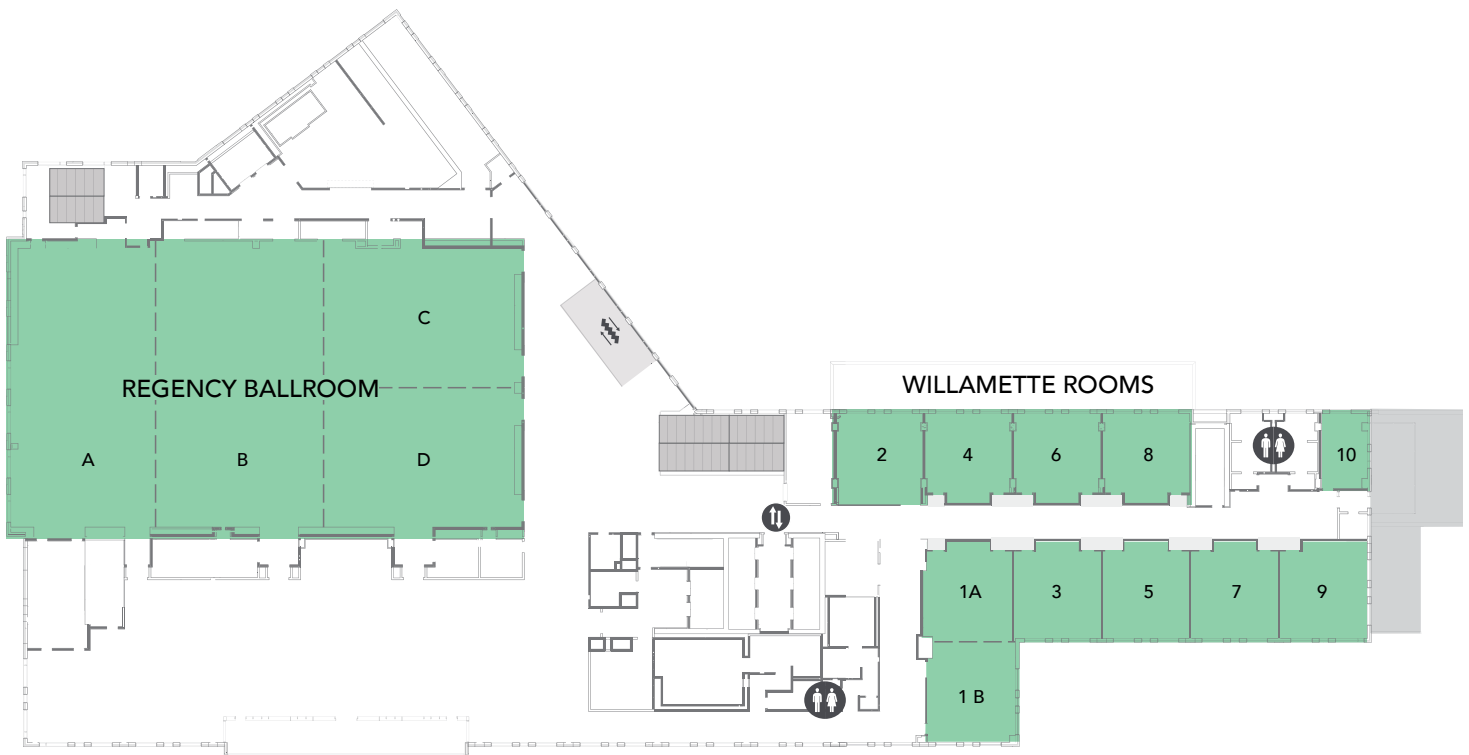


KEY


	All-Gender Restrooms		Escalator
	Restrooms		Stairs
	First Aid		Professional Development
	Elevator		Concessions

HYATT REGENCY PORTLAND AT THE OREGON CONVENTION CENTER

LEVEL 2

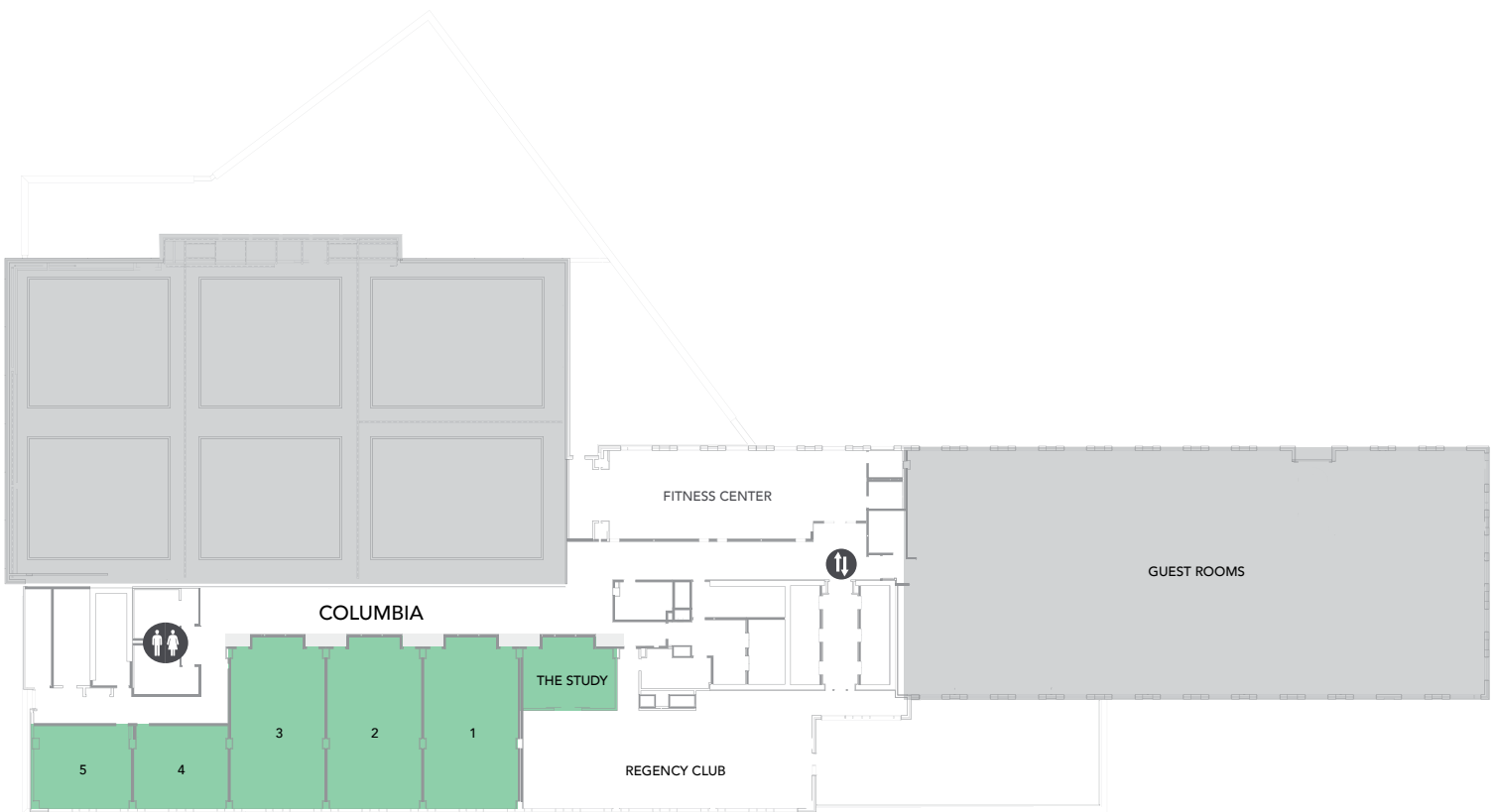


KEY

 All-Gender Restrooms	 Escalator
 Restrooms	 Stairs
 First Aid	 Professional Development
 Elevator	 Concessions

HYATT REGENCY PORTLAND AT THE OREGON CONVENTION CENTER

LEVEL 3



KEY

All-Gender Restrooms	Escalator
Restrooms	Stairs
First Aid	Professional Development
Elevator	Concessions

NOTES

What are your big goals for JSM 2024?

Write them down here and think about how the sessions and events you attend can help you achieve them.

NOTES

NOTES



AS A GLOBAL, SCIENCE-DRIVEN
PHARMACEUTICAL COMPANY,
TAKEDA IS COMMITTED TO
INNOVATION

Takeda has diverse and rich statistical and quantitative expertise. Our Statistical & Quantitative Sciences Organization is best in class and strives to bring **BETTER HEALTH AND A BRIGHTER FUTURE** to patients through



INNOVATIVE TRIAL AND
PROGRAM DESIGN

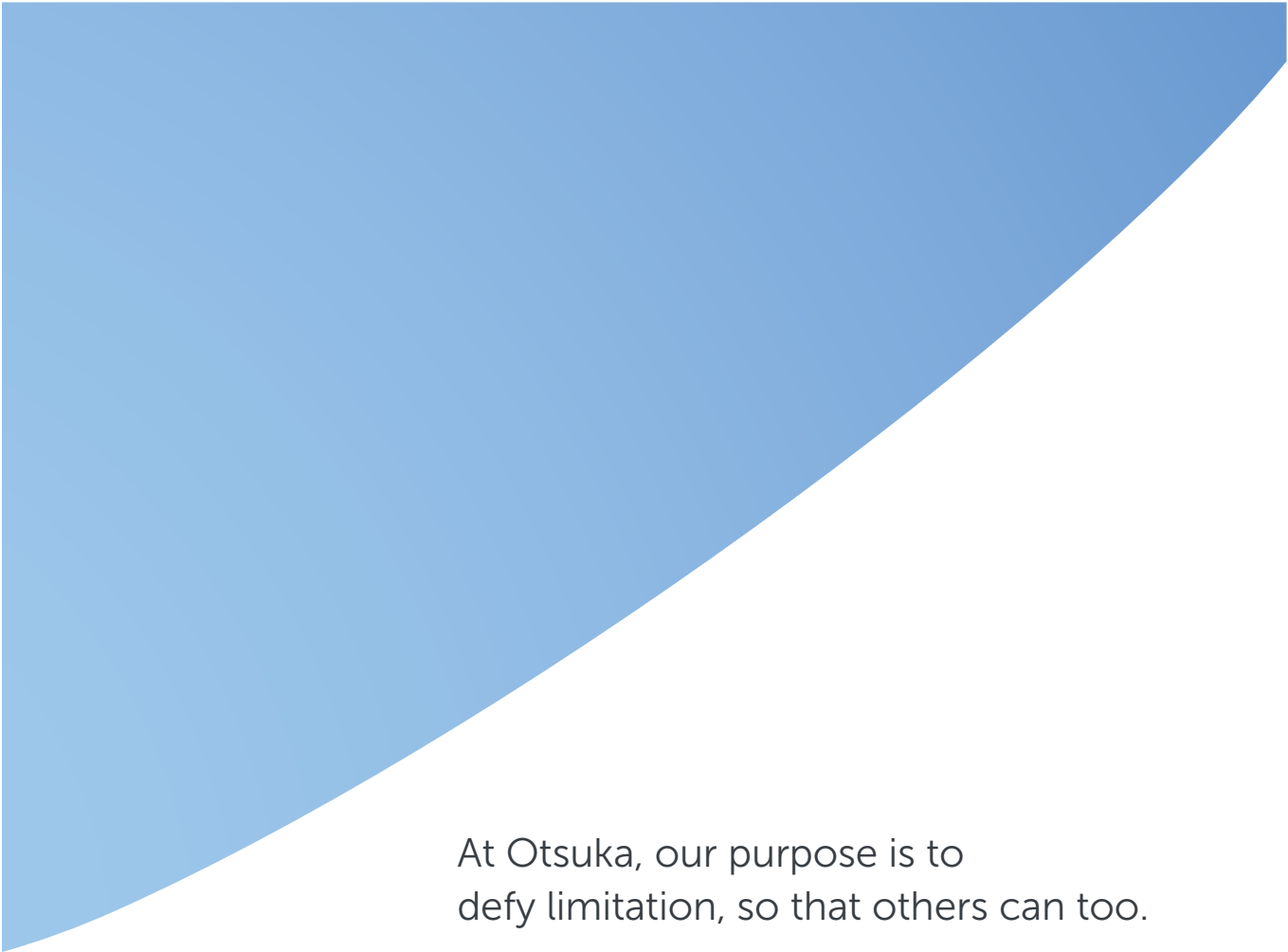


ADVANCED STATISTICAL AND
QUANTITATIVE SCIENCES METHODOLOGY



NOVEL ANALYTICS FOR REAL
WORLD DATA AND EVIDENCE





At Otsuka, our purpose is to
defy limitation, so that others can too.

We have an unwavering belief in going above and beyond—under any circumstances—for patients, families, providers, and each other. This deep-rooted dedication drives us to uncover answers to complex, underserved medical needs, so that patients can push past the limitations of their disease and achieve more than they thought was possible.

Using our analytical expertise through Biostatistics and Data Science and our passion for drug development, we advance clinical research and bring innovative medicines and better products that promote health and wellbeing worldwide.



[in](#) Let's connect
[@OtsukaUS](#)
[www.otsuka-us.com](#)