

One Community: Informing Decisions and Driving Discovery

**TORONTO**  
Ontario, Canada • August 5–10  
**JSM2023**

# QUICK GUIDE

\*American Statistical Association

Casualty Actuarial Society

The Caucus for Women in Statistics

\*International Biometric Society (ENAR and WNAR)

International Chinese Statistical Association

International Indian Statistical Association

\*Institute of Mathematical Statistics

International Society for Bayesian Analysis

International Statistical Institute

Korean International Statistical Society

Royal Statistical Society

\*Statistical Society of Canada

Statistical Society of Australia

*\*Indicates the founding societies of JSM*





# Thank you to our 2023 JSM Sponsors

## Platinum

abbvie

jmp STATISTICAL DISCOVERY

sas

Takeda

## Gold

Berry Consultants  
Statistical Innovation

Lilly

EVEREST

FDA U.S. FOOD & DRUG ADMINISTRATION

MERCK  
INVENTING FOR LIFE

NSA  
WHERE INTELLIGENCE GOES TO WORK®  
IntelligenceCareers.gov/NSA

Pfizer

STATA

2σ TWO SIGMA

Westat

## Silver

AstraZeneca

BeiGene

Boehringer  
Ingelheim

Bristol Myers Squibb™

Cytel

Genentech  
A Member of the Roche Group

NSF

NOVARTIS

Otsuka

Pacific Northwest  
National Laboratory

penFIELD

P&G

RTI  
INTERNATIONAL

UNC  
GILLINGS SCHOOL OF  
GLOBAL PUBLIC HEALTH  
Biostatistics

Find out more at [ww2.amstat.org/meetings/jsm/2023/sponsors](http://ww2.amstat.org/meetings/jsm/2023/sponsors)



Explore the program via the official JSM 2023 mobile app!

Sponsored by 



## Get in on the fun. Join the JSM 2023 **Scavenger Hunt!**

Don't miss the opportunity for a bit of healthy competition and excitement—not to mention **PRIZES**—when you join fellow attendees for the JSM 2023 Scavenger Hunt. The game can be accessed from the app.

Clues to the location of QR codes, which are strategically placed throughout the Metro Toronto Convention Centre, will guide the game. You simply need to scan the code and move on to the next. Each successful QR scan will reveal a little bit

of a secret image. The first five attendees to complete the hunt and unlock the entire image will win prizes.

The scavenger hunt will take place between Sunday, August 6, and Tuesday, August 8 at noon. When you complete the scavenger hunt and reveal the secret image, report to the ASA Membership Booth in the EXPO to see where you've placed and if you've won a prize.

Happy hunting!





**JSM  
DOCENT**  
AND HERE  
TO HELP!

## Docent Program

JSM docents know how JSM 'works' and are willing to share their knowledge. Identified by an orange button, docents can answer questions about how to choose which JSM events to attend, how to network, what to look for in the EXPO, and how to have fun!

---

## WI-FI

Sponsored by **abbvie**

WIFI is available in the  
Metro Toronto Convention Centre,  
Delta Hotel Toronto,  
and  
InterContinental Toronto Centre.

**Network:** JSM2023

**Password:** abbvie23



## JSM Proceedings

Eligibility guidelines and author instructions for JSM 2023 presenters are available at [ww2.amstat.org/meetings/jsm/2023/submissions.cfm](http://ww2.amstat.org/meetings/jsm/2023/submissions.cfm).

---



# Good to Know

## Emergency Telephone Messages



In case of emergency, messages may be left during registration hours by calling (416) 585-8160. We will attempt to contact the registrant using the contact information provided in their registration.

## Accessibility and Inclusion

The American Statistical Association strives to foster accessible spaces during the Joint Statistical Meetings. Here's what's already part of our conference planning process:

- Keynote and plenary sessions have live captioning.
- Speakers use microphones for all sessions.
- Clearly marked reserved seating is available at the front of every room.
- Clearly marked reserved space is available in every session room for wheelchairs/scooters.
- The ASA works with individuals who request accommodation (via JSM registration) based on their session selections.
- All conference facilities are accessible to wheelchair and scooter users.
- Elevators are marked, and staff are able to help you identify elevators to navigate to your next session or meeting.
- Our hotel team works with attendees who need hotel accommodation.
- Attendees have access to a nursing/lactation room.
- There are all gender restrooms.
- There is a quiet reflection space for those in need of a place to pray or take a respite from conference activity.

## Assistance for Those with Disabilities

Please contact a staff member at the Help Desk in the registration area if you have a disability that may impede your participation.



## Child Care

Kiddie Corp is the official child-care provider for JSM 2023. Arrangements should have been made in advance. Please contact Kiddie Corp at (858) 455-1718 or [info@kiddiecorp.com](mailto:info@kiddiecorp.com) for any questions or possible availability.

## Policies

### Electronic Devices

All cell phones, pagers, and other electronic devices should be silenced before attending any session or meeting.

### Smoking

Smoking is not permitted at any JSM function unless the event is held outside.

### Sustainability

The convention center has instituted an aggressive waste diversion program to reduce waste sent to the landfill. As part of their Corporate Social Responsibility Program, they have partnered with several local community organizations to donate prepared food surpluses (still safe for consumption) and leftover materials from events. Their ongoing food donation program provides meals



## Good to Know

and snacks for school children across Toronto, as well as several local family and women’s shelters. Additionally, they donate material left over from events such as delegate bags, plants, furniture, and carpet that may be used again to community organizations.

### Code of Conduct

As a professional society, the American Statistical Association is committed to providing an atmosphere that encourages the free expression and exchange of ideas. Consistent with this commitment, it is the policy of the ASA that all

participants in ASA activities will enjoy a welcoming environment free from unlawful discrimination, harassment, and retaliation. All participants in ASA activities also agree to comply with all rules and conditions of the activities, which are subject to change without notice.



Please read the complete code of conduct before attending: [www.amstat.org/meetings/code-of-conduct](http://www.amstat.org/meetings/code-of-conduct)

# Combine Your Expertise With Our Mission

Join a **community** that’s committed to continual learning, keeping work and life in balance, and driving mission-critical decisions that keep our nation safe.

- Professional Training & Development
- Tuition Assistance
- 50+ Days Paid Time Off Per Year
- Flexible Work Schedules
- Innovation Pods



NSA Careers

U.S. citizenship is required.  
NSA is an Equal Opportunity Employer.

Apply now at [IntelligenceCareers.gov/NSA](https://IntelligenceCareers.gov/NSA)



# Hours of Operation



CC = Metro Toronto Convention Centre | D = Delta Hotel Toronto | I = InterContinental Toronto Centre

## Registration and ASA Membership/ Help Desk/ Press Desk

CC-South Registration Area  
(600 Level)

### Saturday

7:30 a.m. – 6:00 p.m.

### Sunday

7:30 a.m. – 8:30 p.m.

### Monday – Tuesday

7:30 a.m. – 6:00 p.m.

### Wednesday

7:30 a.m. – 4:30 p.m.

### Thursday

7:30 a.m. – 10:30 a.m.

## Speaker Ready Room

*Sponsored by AbbVie*

CC-711

### Sunday

9:00 a.m. – 7:00 p.m.

### Monday – Wednesday

7:00 a.m. – 6:00 p.m.

### Thursday

7:00 a.m. – 10:30 a.m.

## Career Service

CC-Hall D

### Saturday

9:00 a.m. – 5:00 p.m.

*(pre-registered attendee  
badge pick-up and onsite  
registration only)*

### Sunday

1:00 p.m. – 6:00 p.m.

### Monday – Tuesday

8:00 a.m. – 5:30 p.m.

### Wednesday

8:00 a.m. – 2:30 p.m.

*(onsite registration closes at noon)*

## EXPO 2023 and ASA Store

CC-Hall E

### Sunday

1:00 p.m. – 6:00 p.m.

8:30 p.m. – 10:30 p.m.

### Monday – Tuesday

9:00 a.m. – 5:30 p.m.

### Wednesday

9:00 a.m. – 2:30 p.m.

## Tourism Toronto Restaurant & Tourism Information Center

CC-South Registration Area  
(600 Level)

### Sunday – Wednesday

10:00 a.m. – 5:00 p.m.

## JSM Luggage Storage

*Sponsored by Bristol Myers Squibb*

CC-South Registration Area  
(600 Level)

### Wednesday

8:00 a.m. – 6:30 p.m.

### Thursday

8:00 a.m. – 1:00 p.m.

## Quiet Reflection & Mindfulness Area

CC-710

### Sunday

7:30 a.m. – 10:30 p.m.

### Monday – Wednesday

7:00 a.m. – 6:00 p.m.

### Thursday

7:30 a.m. – 12:00 p.m.



Follow us on Twitter using @AmstatNews and #JSM2023



# Featured Speakers

Sunday, August 6

## IMS Lawrence D. Brown PhD Student Award Session

2:00 p.m.

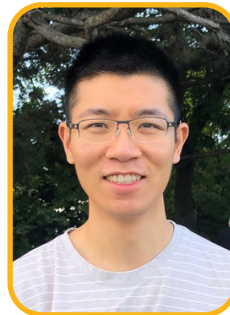
CC-201D



### Yaqi Duan

Massachusetts Institute of Technology

Optimal Policy Evaluation  
Using Kernel-Based  
Temporal Difference  
Methods



### Yuetian Luo

University of Wisconsin - Madison

Tensor-on-Tensor  
Regression: Riemannian  
Optimization,  
Over-Parameterization,  
Computational Barriers,  
and Their Interplay



### Tudor Manole

Carnegie Mellon University

Plugin Estimation of  
Smooth Optimal  
Transport Maps





# Featured Speakers

Monday, August 7

## Medallion Lecture I

8:30 a.m.  
CC-714A

**Ingrid Van Keilegom**  
KU Leuven

Copula-Based Cox  
Proportional Hazards  
Model for Dependent  
Censoring



## ASA President's Invited Address

4:00 p.m.  
CC-Hall FG

**Robert Santos**  
US Census Bureau



## Wald Lecture I

10:30 a.m.  
CC-718A

**Bin Yu**  
University of California,  
Berkeley

Seeking Boolean  
Interactions in  
Biomedicine and Proofs



## IMS Presidential Address

8:00 p.m.  
CC-718A

**Peter Bühlmann**  
ETH Zurich

IMS: What Does It  
Stand For? What Could  
It Stand For?

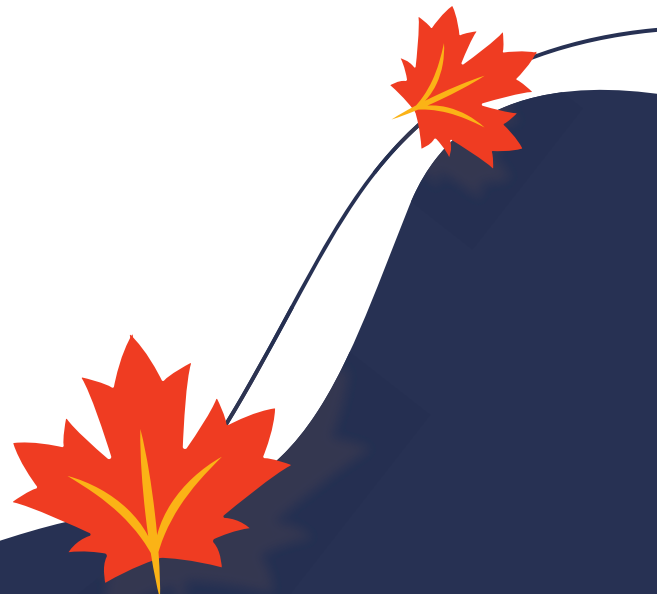
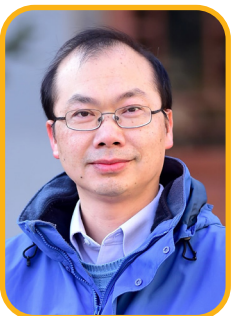


## Medallion Lecture II

2:00 p.m.  
CC-202A, CC-202B

**Runze Li**  
Penn State University

Feature Screening for  
Ultra-High Dimensional  
Data: Methods and  
Applications





# Featured Speakers

Tuesday, August 8



## IMS Grace Wahba Award Lecture

10:30 a.m.

CC-718B

**Wing-Hung Wong**  
Stanford University

Causal Inference by  
Encoding Generative  
Modeling



## Wald Lecture II

4:00 p.m.

CC-718B

**Bin Yu**  
University of California,  
Berkeley

Sparse Dictionary Learning  
and Deep Learning in  
Practice and Theory



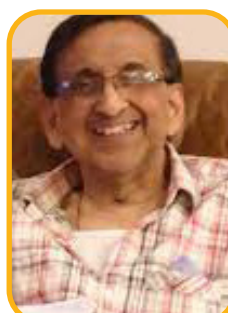
## Blackwell Award Lecture

2:00 p.m.

CC-801B

**Ya'acov Ritov**  
University of Michigan

Minimax vs. (Empirical)  
Bayes Prediction



## Deming Lecture

4:00 p.m.

CC-Hall FG

**Malay Ghosh**  
University of Florida

Small Area Estimation: A  
Personal Perspective



## Florence Nightingale David Award

2:00 p.m.

CC-718B

**Karen Bandeen-Roche**  
Johns Hopkins University

More Than Freedom  
from Disease: A Quest to  
Determine 'Health'



## ASA President's Address and Awards

8:00 p.m.

CC-Hall FG

**Dionne Price**  
US Food and Drug  
Administration

Our Mission in Action: Past,  
Present, and Future



# Featured Speakers

Wednesday, August 9

## Medallion Lecture III

10:30 a.m.

CC-202C, CC-202D

**Yingying Fan**  
University of Southern  
California

High-Dimensional  
Random Forests Estimation  
and Inference



## Medallion Lecture IV

2:00 p.m.

CC-713A

**Aurore Delaigle**  
University of Melbourne

Measurement Errors in  
Diet and Nutrition



## David R. Cox Foundations of Statistics Award

10:30 a.m.

CC-701A

**Nancy Reid**  
University of Toronto

The Importance of  
Foundations in  
Statistical Science



## COPSS Distinguished Achievement Award and Lectureship

4:00 p.m.

CC-Hall FG

**Bin Yu**  
University of California,  
Berkeley

Veridical Data Science  
Toward Trustworthy AI



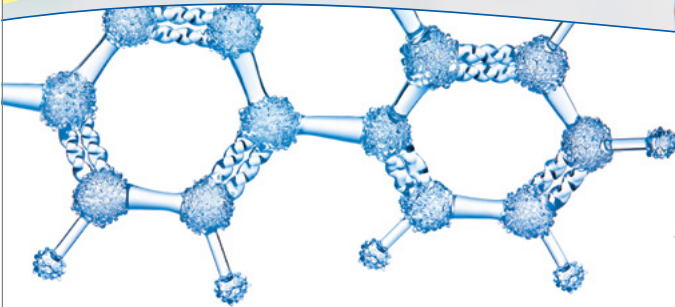
WI-FI *Sponsored by AbbVie*

Metro Toronto Convention Centre, Delta Hotel Toronto,  
and InterContinental Toronto Centre.

**Network:** JSM2023

**Password:** abbvie23

Passion for Innovation.  
Compassion for Patients.™

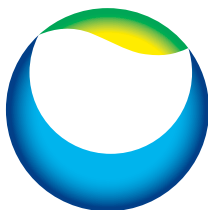


## With more than 120 years of scientific expertise,

Daiichi Sankyo is dedicated to creating new modalities and innovative medicines by leveraging our world-class science and technology to contribute to the enrichment of quality of life around the world.

In addition to our current portfolio of medicines for cancer and cardiovascular disease, Daiichi Sankyo is primarily focused on developing novel therapies for people with cancer as well as other diseases with high unmet medical needs. Learn more at [DaiichiSankyo.us](https://www.daiichisankyo.us).

For rewarding full-time employment opportunities go to [Careers.DSI.com](https://careers.dsi.com).



Daiichi-Sankyo



CC = Metro Toronto Convention Centre | D = Delta Hotel Toronto | I = InterContinental Toronto Centre

## Introductory Overview Lectures

**Sunday, August 6, 4:00 p.m.**

CC-718A

Applications of Computational Social Science to Diverse Fields

**Monday, August 7, 8:30 a.m.**

CC-718A

Astronomers Speak Statistics

**Tuesday, August 8, 8:30 a.m.**

CC-718A

Fundamentals of Interpretable Machine Learning

**Wednesday, August 9, 8:30 a.m.**

CC-718A

Randomized Clinical Trials with Surrogate Markers

**Thursday, August 10, 8:30 a.m.**

CC-718A

Genomic Risk Prediction: Algorithms, Fairness, and Applications

## Late-Breaking Sessions

**Monday, August 7, 2:00 p.m.**

CC-718A

It Takes More Than a Village: Capacity-Building Efforts for the Statistical Community

**Tuesday, August 8, 10:30 a.m.**

CC-718A

ChatGPT: Job-Killer, Flash in the Pan, or a Statistician's Best Friend?



# UF Biostatistics

Add Master of Science in Biostatistics from the **University of Florida** to your resume

Our MS online program offers you flexibility to study at times and locations convenient to you.

- ❖ Same curriculum and faculty as our renowned on-campus program
- ❖ Innovative, interdisciplinary program jointly housed in both the College of Public Health & Health Professions and College of Medicine
- ❖ Study under faculty including leaders in the development of statistical methods for clinical trials, survival analysis, decision theory, genetic studies, big data, metabolomics, genomics, infectious disease, and artificial intelligence.

**Apply Now for Fall 2023**

Learn more about how you can expand your job opportunities and increase your earnings potential.

[biostat.ufl.edu/MSONline](https://biostat.ufl.edu/MSONline)





# Special Events



## JSM First-Time Attendee Orientation and Reception

*Sponsored by Novartis*

**Sunday, August 6**

**12:30 p.m. – 2:00 p.m.**

D-SOCO Ballroom

Join fellow first-timers at this orientation reception and learn how to take part in all JSM offers.

---

## JSM Opening Mixer & Invited Poster Session

*Sponsored by Eli Lilly & Company and Westat*

**Sunday, August 6**

**8:30 p.m. – 10:30 p.m.**

CC-Hall E

All conference attendees are encouraged to come together for the kick-off social event of JSM.



## JSM Student Mixer

*Sponsored by Two Sigma*

**Monday, August 7**

**6:00 p.m. – 8:00 p.m.**

I-Ballroom A, I - Ballroom B

The Student Mixer provides an opportunity for students to join their contemporaries for a fun-filled time.



## IMS Awards Ceremony and Presidential Address

**Monday, August 7**  
**8:00 p.m. – 11:00 p.m.**

CC-718A

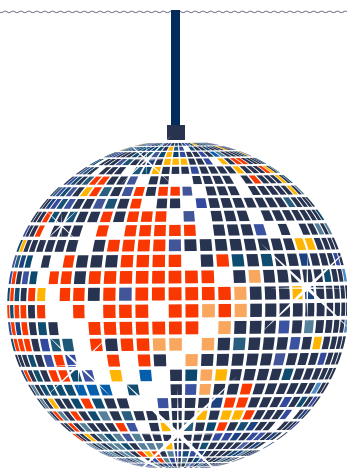
*\*Followed by a reception*

---

## ASA President's Address and Awards

**Tuesday, August 8**  
**8:00 p.m. – 9:30 p.m.**

CC-Hall FG



## JSM Dance Party

*Sponsored by BeiGene*

**Tuesday, August 8**  
**9:30 p.m. – 12:00 a.m.**

D-SOCO Ballroom

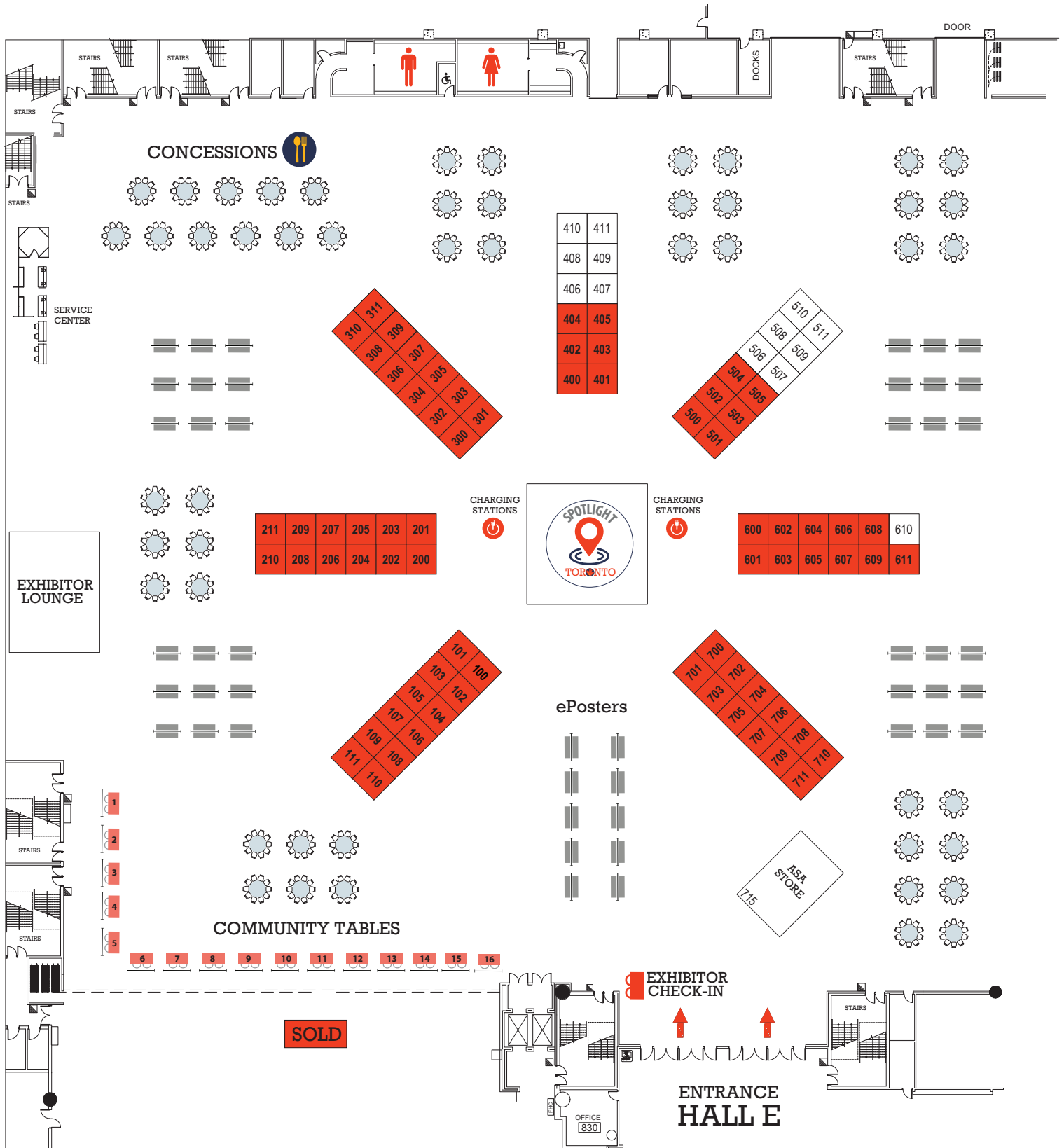
A fun highlight of JSM, the dance party is held right after the ASA President's Address and Awards. There are snacks, a cash bar, and music!

**LOOKING TO CONNECT?** Join the ASA GivesBack group in the EXPO to meet new friends and destress through doing art! It's all part of this year's **Impact Project**. Look for more information in the JSM daily emails.



# EXPO Hall E

Don't miss the ASA Store • Charging Stations • JSM 2024 booth • Food Concessions







# JSM EXPO

The JSM EXPO is where you want to be to learn about, network with, and celebrate the statistical community all at once.

|  |  |   |
|--|--|---|
| American Statistical Association ..... 709, 711                        | International Christian Statisticians ..... Community Table 4      | SPAIG Committee ..... Community Table 14  |
| ASA GivesBack ..... Community Table 9                                  | JEDI Outreach Group ..... Community Table 7                        | Springer Nature ..... 210   |
| ASA LGBTQ+ Advocacy Committee ..... Community Table 6                  | JMP Statistical Discovery..... 108, 110                            | StataCorp ..... 100, 102, 104, 106  |
| AstraZeneca ..... 305  | JSM 2024 ..... 707   | Statgraphics Technologies..... 500  |
| Astrostatistics Interest Group ..... Community Table 1                 | Korean International Statistical Society ..... Community Table 3   | Statistical Programmers & Analysts ..... Community Table 13                                   |
| Berry Consultants ..... 601  | MathWorks ..... 310  | Statistical Society of Canada ..... 702   |
| Bluesky Statistics ..... 404   | Mayo Clinic..... 308   | Statistics Education (General and Health Sciences) and History ..... Community Table 5        |
| Boehringer-Ingelheim Pharmaceuticals, Inc. .... 105                    | Merck ..... 103  | Statistics Without Borders ..... Community Table 11   |
| Bureau of Economic Analysis.... 706                                    | Minitab, Inc. .... 101   | Taylor & Francis ..... 402  |
| Bureau of Justice Statistics..... 405                                  | National Assessment of Educational Progress..... 608               | The Lotus Group ..... 200   |
| Bureau of Labor Statistics..... 107                                    | National Center for Education Statistics, AIR ..... 111            | UNC Gillings School of Public Health Department of Biostatistics ..... 604                    |
| Bureau of Transportation Statistics ..... 109                          | National Center for Health Statistics, CDC..... 504                | University of Florida Department of Biostatistics ..... 403                                   |
| Cambridge University Press ..... 400, 401                              | National Institute of Statistical Sciences ..... Community Table 2 | University of Kansas Dept. of Biostatistics & Data Science ..... 603                          |
| Cantabular ..... 202   | National Science Foundation ..... 204, 206, 208                    | US Census Bureau..... 600   |
| CDC: Office of Public Health Data, Surveillance, and Technology .. 505 | National Security Agency ..... 203                                 | Washington University in St. Louis..... 201   |
| Center for Statistical Science, Peking University..... 205             | NYU Langone Health ..... 606                                       | Western North American Region of the International Biometric Society ..... Community Table 10 |
| Clymb Clinical..... 309  | Pacific Northwest National Laboratory ..... 611                    |   |
| Cytel Inc. .... 710  | Penn State University ..... 301                                    |   |
| Daiichi Sankyo, Inc. .... 303  | Pennfield Search Partners ..... 605                                |   |
| Everest Clinical Research .. 304, 306                                  | Plat AI ..... 302  |   |
| FDA, Center for Drug Evaluation & Research ..... 609                   | Prosensus ..... 502  |   |
| Genentech..... 211   | Realtime CRO, Inc. .... 503  |   |
| Hawkes Learning ..... 501  | Rho ..... 08   |   |
| ICPSR at the University of Michigan..... 207                           | Royal Statistical Society ..... 311                                |   |
| Institute for Mathematical and Statistical Innovation ..... 607        | Sandia National Laboratories .... 209                              |   |
| Institute of Mathematical Statistics ..... 700                         | SAS ..... 701, 703, 705  |   |
| International Chinese Statistical Association ..... Community Table 8  | Science and Technology Policy Fellowships, AAAS ..... 307          |   |
|  | SIAM ..... 602   |   |
|  | Softlytics Corp. .... 300  |   |

## EXPO Hours

### Sunday, August 6

1:00 p.m. – 6:00 p.m.

8:30 p.m. – 10:30 p.m. (Opening Mixer)

### Monday, August 7

9:00 a.m. – 5:30 p.m.

### Tuesday, August 8

9:00 a.m. – 5:30 p.m.

### Wednesday, August 9

9:00 a.m. – 2:30 p.m.



## JSM Spotlight Schedule

Where is the best place to grab refreshments or a treat and network with other attendees? Inside the JSM EXPO's Spotlight! Take a break and try something fun every day.



### Sunday, August 6

#### 1:00 p.m. Spotlight Kick-Off

Kick off JSM with a Retro Ice Cream bar while getting your first look at the EXPO.

#### 3:30 p.m. Sample Canadian Cheese

Take another turn around the EXPO and sample a variety of Canadian cheeses. Mingle with other attendees and compare notes!

## Monday, August 7



### 10:00 a.m. JSM Coffee House

Refresh with a cup of freshly brewed coffee or a selection of teas.

### 11:00 a.m. JSM Photobooth

**Sponsored by  
Pennfield Partners**

Swing by for snapshots with your friends using fun props.

### 1:30 p.m. Popcorn Break

**Sponsored by  
National Security Agency**

Stop by for a tasty bag of popcorn—the classic pick-me-up (or just enjoy the smell).

### 3:30 p.m. Microbrew Tasting

Come taste a variety of local microbrews and cider (while supplies last).

## Tuesday, August 8

### 10:00 a.m. JSM Coffee House

**Sponsored by RTI International**

Refresh with a cup of freshly brewed coffee or a selection of teas.

### 1:30 p.m. Popcorn Break

Stop by for a tasty bag of popcorn—the classic pick-me-up (or just enjoy the smell).



### 3:30 p.m. Sample Area Wines

**Sponsored by  
Everest Clinical Research**

Don't have extra time to visit Niagara while in Canada? Get a taste while at JSM by sampling Niagara-area wines. Sip pours of reds and white from vineyards such as Château des Charmes, Cave Spring Cellars, Henry of Pelham Estate Winery, and Trius Winery (while supplies last).



## Wednesday, August 9

### 10:00 a.m. JSM Coffee House

Refresh with a cup of freshly brewed coffee or a selection of teas.

### Food Concessions

Looking for coffee, lunch, or a snack? You can grab something to eat in the EXPO and then check out cutting-edge companies, chat up representatives from additional statistical communities, and get in-depth information about new research presented during poster sessions.



# Career Service

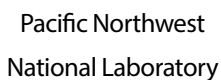
Would you like to explore career opportunities with top statistical employers? Registering for the JSM Career Service, located in Hall D of the Metro Toronto Convention Centre, will give you the ability to research job postings and contact employers. Access is for registered applicants and employers only, and interviews are by appointment.

**Sign up** by visiting the JSM Registration Desk and asking to add the Career Service to your registration..

## Fee

- ASA Student Member ... \$50
- Student Nonmember .... \$75
- ASA Member ..... \$100
- Nonmember ..... \$150

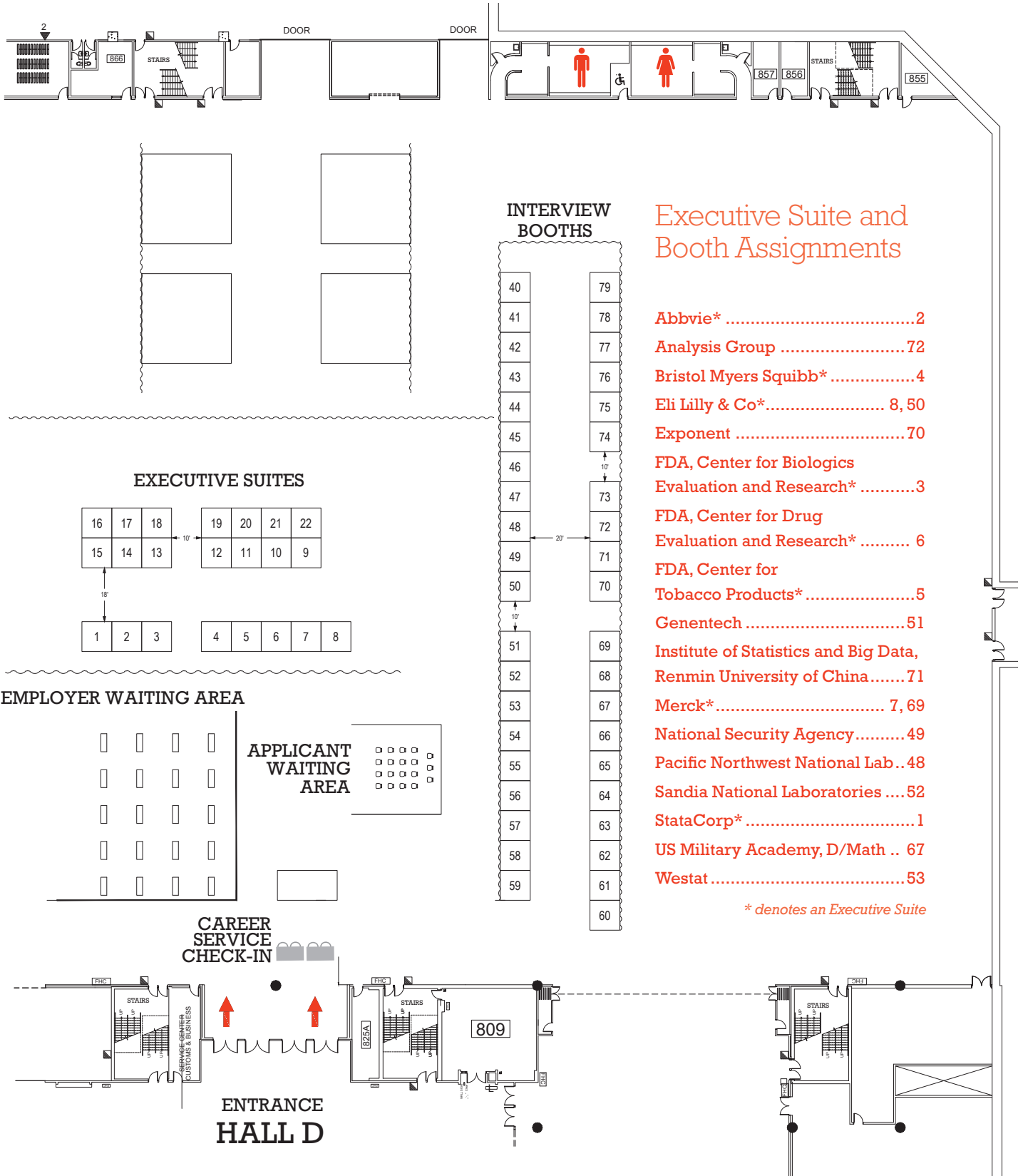
## Employers





# Career Service Hall D

Preregistration required. To register onsite, go to the JSM Registration Desk.



## Executive Suite and Booth Assignments

- Abbvie\* .....2
- Analysis Group .....72
- Bristol Myers Squibb\* .....4
- Eli Lilly & Co\* ..... 8, 50
- Exponent .....70
- FDA, Center for Biologics Evaluation and Research\* .....3
- FDA, Center for Drug Evaluation and Research\* ..... 6
- FDA, Center for Tobacco Products\* .....5
- Genentech .....51
- Institute of Statistics and Big Data, Renmin University of China ..... 71
- Merck\* ..... 7, 69
- National Security Agency .....49
- Pacific Northwest National Lab..48
- Sandia National Laboratories ....52
- StataCorp\* ..... 1
- US Military Academy, D/Math .. 67
- Westat .....53

\* denotes an Executive Suite



# Professional Development



Continuing education is a fundamental component of the professional life of statisticians. The Professional Development program at JSM offers more than 30 short courses and workshops on topics such as big data, clinical trials, statistical computing, and soft skills. Titles, instructors, descriptions, and schedules are available in the JSM app and conference program.

All offerings are at the Metro Toronto Convention Centre. Most require an additional fee.

**To add a course** or workshop to your registration, go to the JSM Registration Desk.



# Roundtables

Looking for something to do for breakfast or lunch? Want a less formal presentation and a way to meet new people? A JSM roundtable or Speaker with Lunch session might be right for you.

Look through the options in the JSM conference program or app. All roundtables and Speaker with Lunch sessions cost extra. Visit the JSM Registration Desk to check availability and add one to your registration.

## Speakers with Lunch



**Sunday, August 6, 12:30 p.m. – 1:50 p.m.**

**SPAIG Committee Speaker with Lunch**

Partnerships Promoting Cross-Sector Collaborations:  
Why, How, and What?

**W.Y. Lou, University of Toronto**



**Monday, August 7, 12:30 p.m. – 1:50 p.m.**

**Section on Statistics in Sports**

**Speaker with Lunch**

Shot Trajectory: Data Analysis and Ice Hockey in the  
Twenty-First Century

**Andrew Thomas**



**Tuesday, August 8, 12:30 p.m. – 1:50 p.m.**

**Economic Outlook Luncheon**

Off the Books: Exploring Alternate Measures of  
Technical Change and Knowledge Diffusion

**Michelle Alexopoulos, University of Toronto**



**Wednesday, August 9, 12:30 p.m. – 1:50 p.m.**

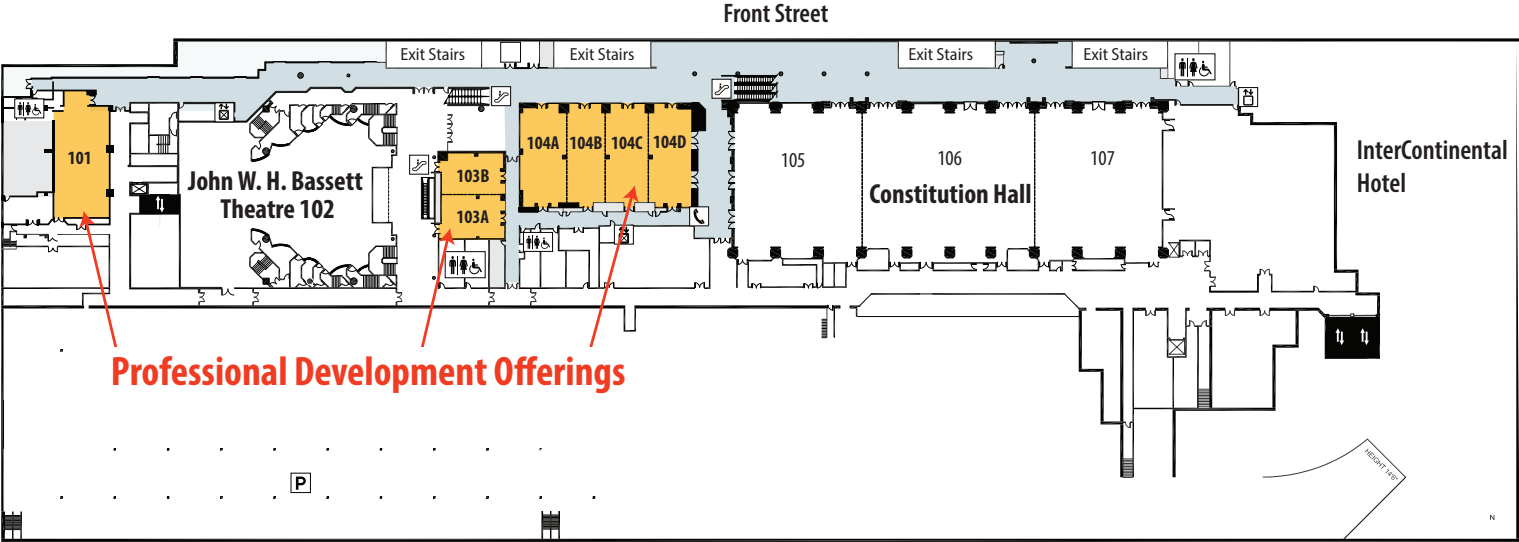
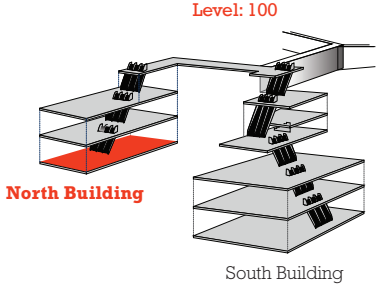
**Health Policy Statistics Section Speaker  
with Lunch**

Applied Artificial Intelligence in Healthcare: From  
Compute to Care

**Muhammad Mamdani, Institute for Clinical  
Evaluative Sciences**

# Metro Toronto Convention Center

## North Building Level 100



**KEY**

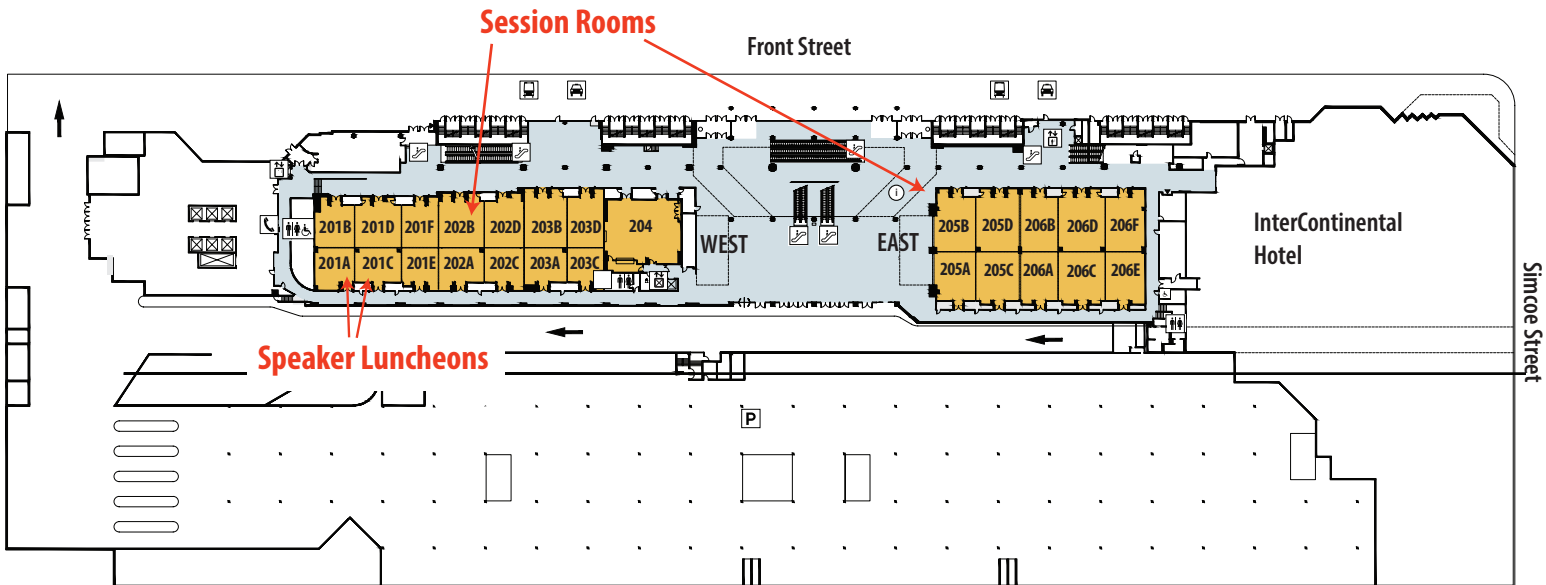
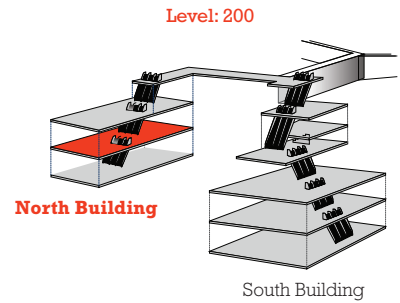
|  |           |  |                  |
|--|-----------|--|------------------|
|  | Washrooms |  | Freight Elevator |
|  | Escalator |  | Public Elevator  |



# Metro Toronto Convention Center

## North Building

### Level 200

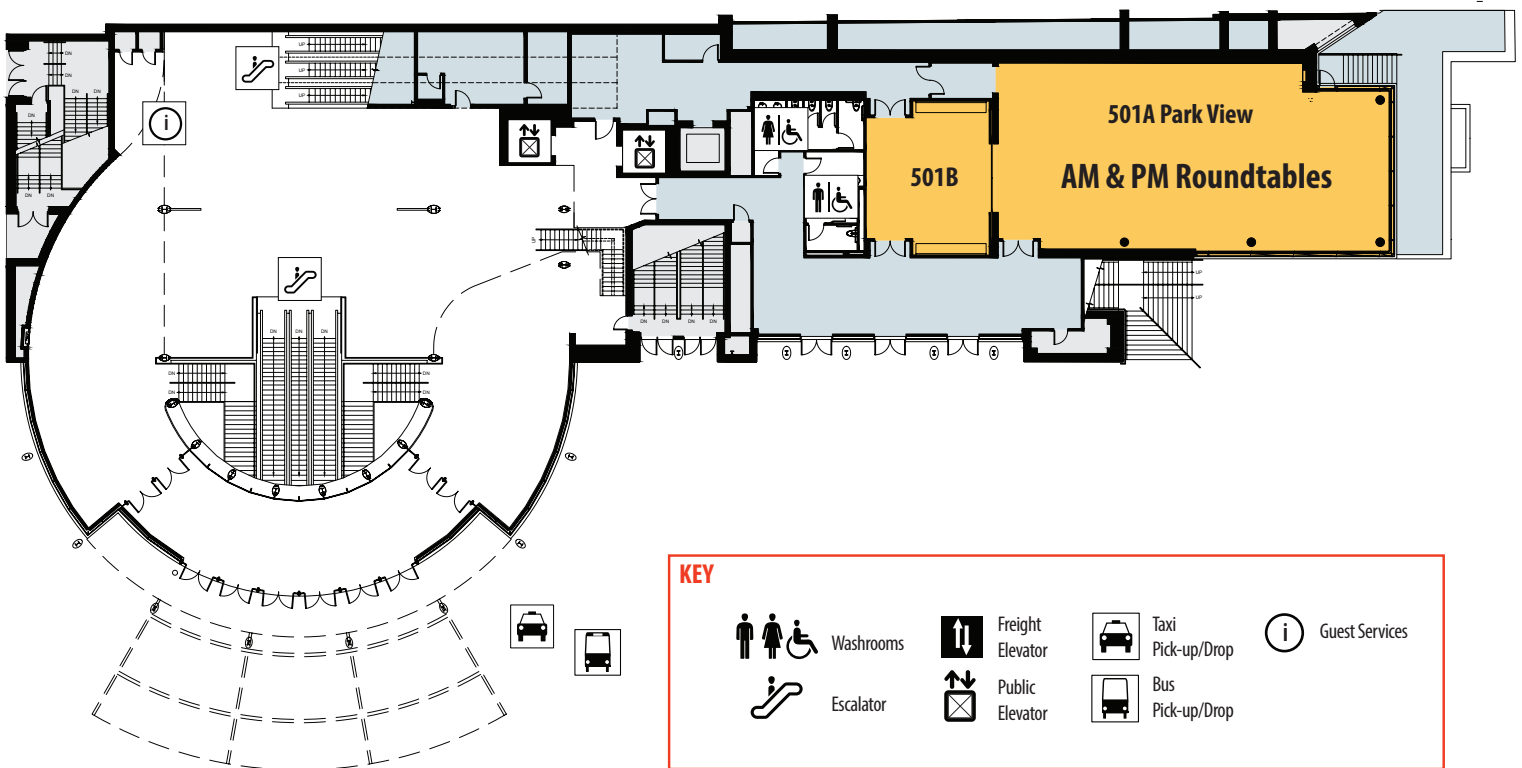
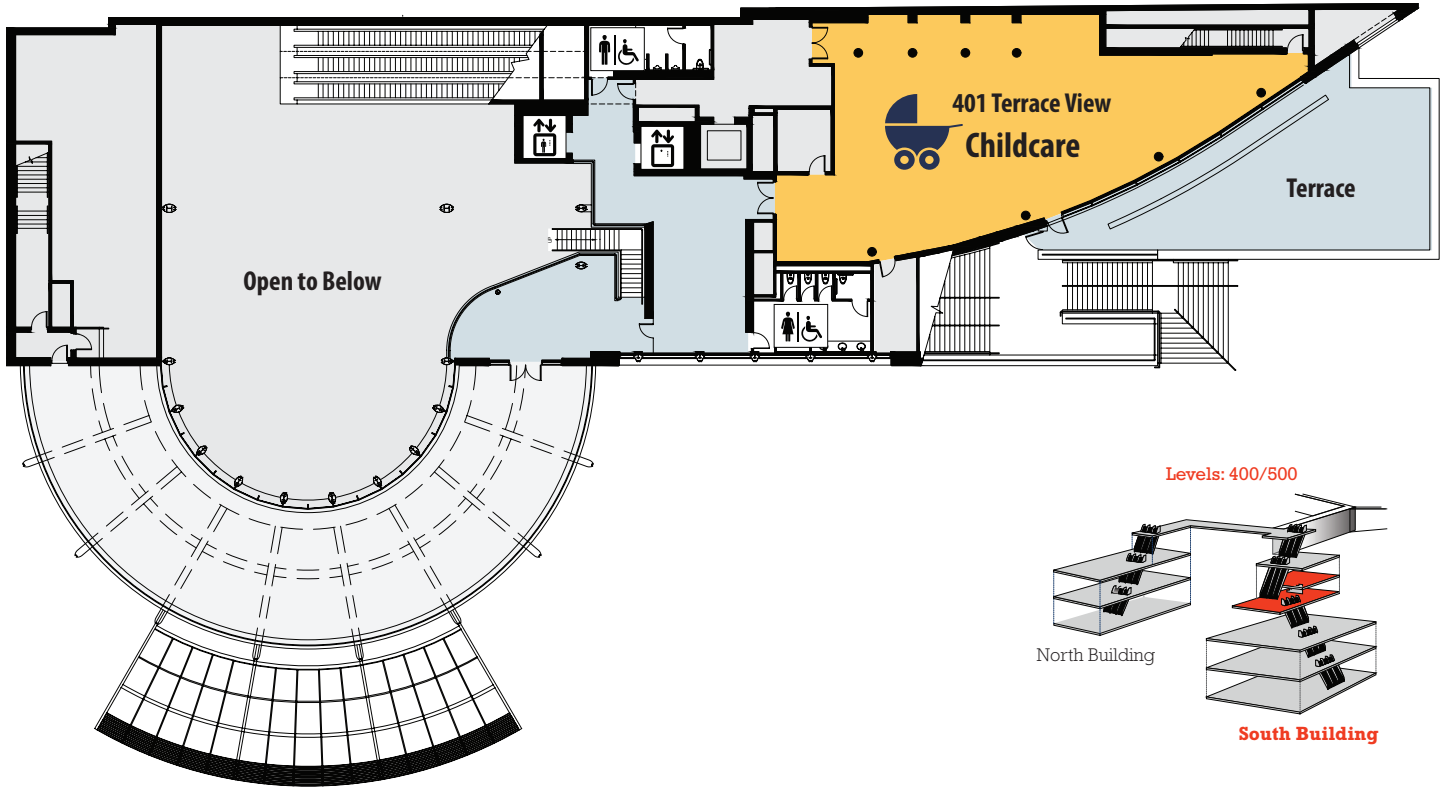


#### KEY

- |  |           |  |                  |  |                   |  |                |
|--|-----------|--|------------------|--|-------------------|--|----------------|
|  | Washrooms |  | Freight Elevator |  | Taxi Pick-up/Drop |  | Guest Services |
|  | Escalator |  | Public Elevator  |  | Bus Pick-up/Drop  |  | First Aid      |

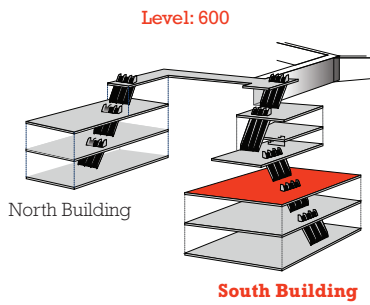
# Metro Toronto Convention Center

## South Building Level 400/500



# Metro Toronto Convention Center

## South Building Level 600



JSM Housing Desk  
Saturday–Monday

JSM Luggage Storage  
Wednesday–Thursday

Registration

Exhibit Hall  
Ceiling Space

Lower Simcoe Street

### KEY



Washrooms



Freight  
Elevator



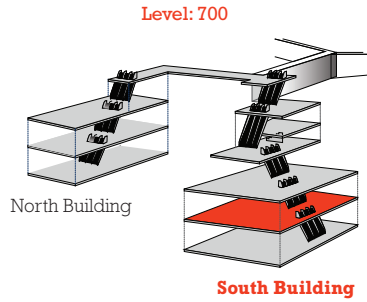
Escalator



Public  
Elevator

# Metro Toronto Convention Center

## South Building Level 700

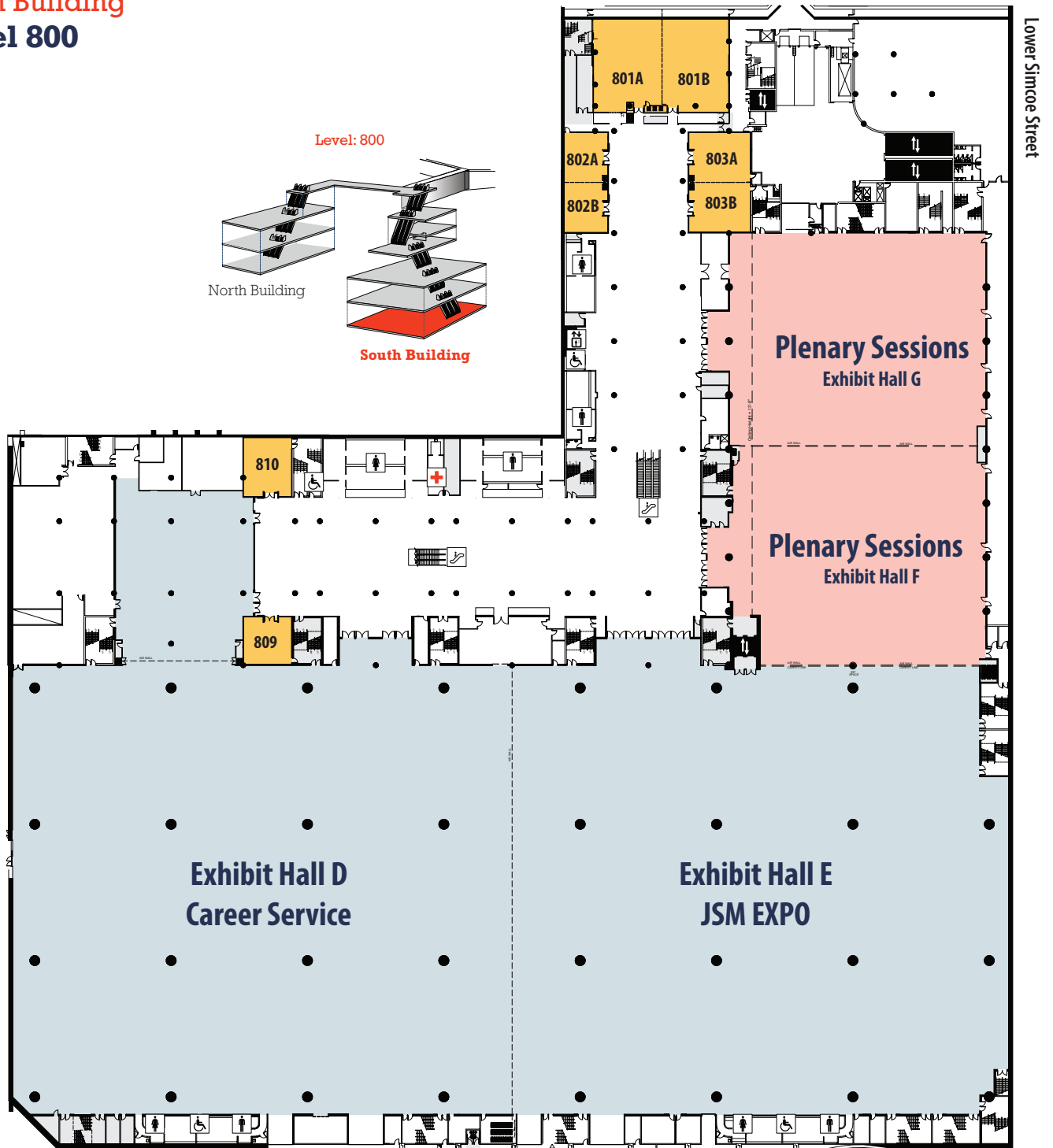


**KEY**

|  |           |  |                  |
|--|-----------|--|------------------|
|  | Washrooms |  | Freight Elevator |
|  | Escalator |  | Public Elevator  |

# Metro Toronto Convention Center

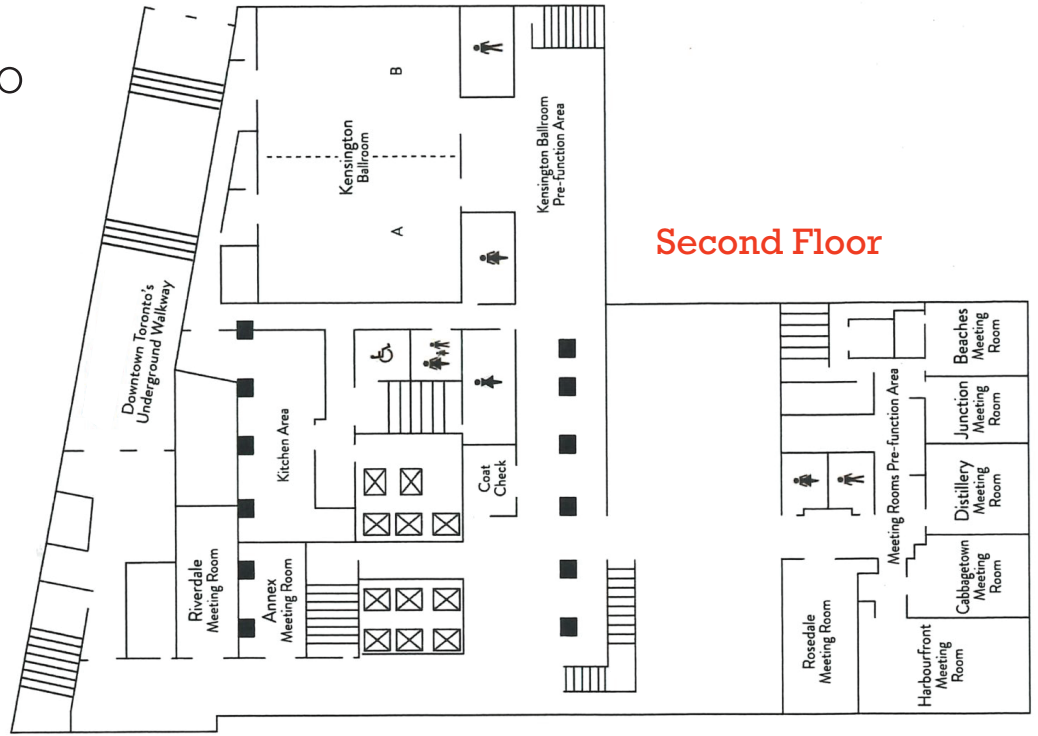
## South Building Level 800



**KEY**

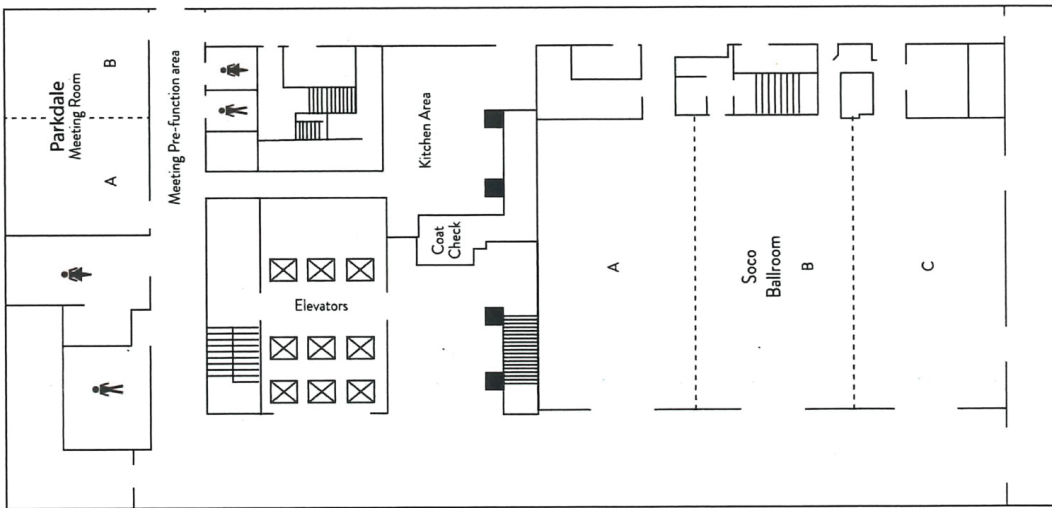
|  |           |  |                  |  |           |
|--|-----------|--|------------------|--|-----------|
|  | Washrooms |  | Freight Elevator |  | First Aid |
|  | Escalator |  | Public Elevator  |  |           |

# Delta Hotel Toronto



## Second Floor

## Third Floor

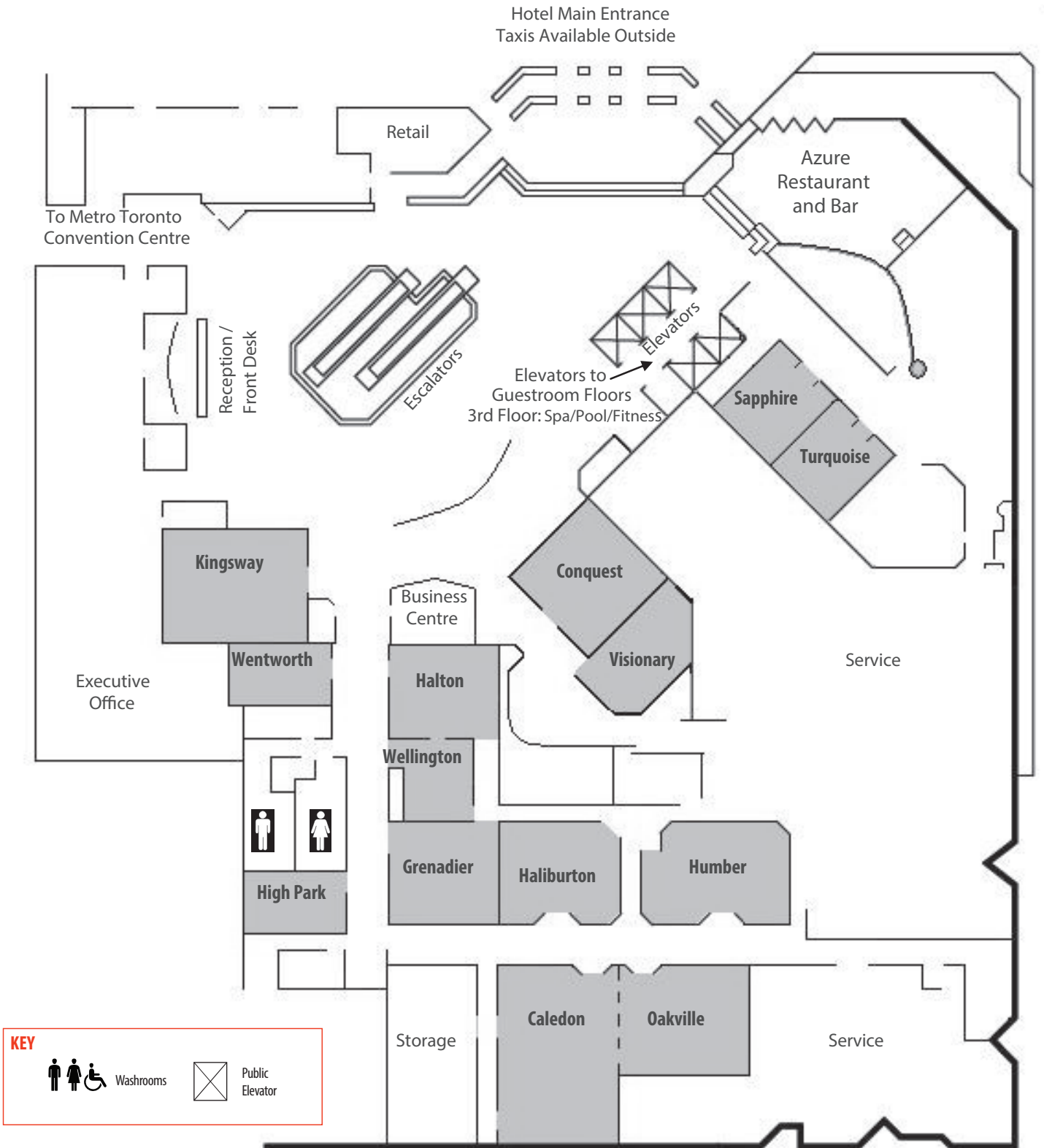


### KEY



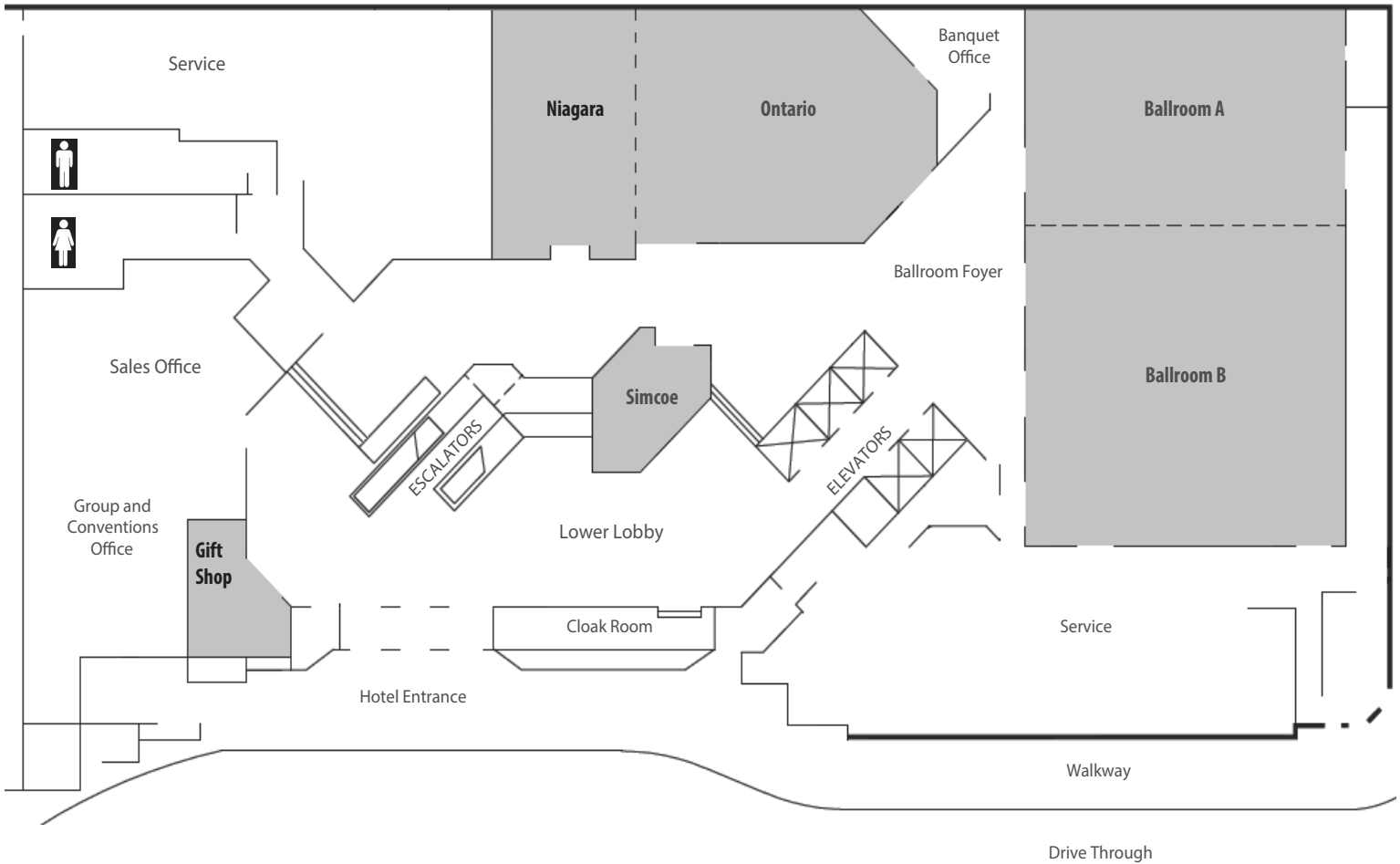
# InterContinental Toronto Centre

## Main Lobby Level



# InterContinental Toronto Centre

## Lower Lobby Level



**KEY**

|   |   |           |   |                 |
|---|---|-----------|---|-----------------|
|  |  | Washrooms |  | Public Elevator |
|---|---|-----------|---|-----------------|



## NOTE PAGES

## NOTE PAGES

What are your big goals for JSM 2023?

Write them down here and think about how the sessions and events you attend can help you achieve them.



AS A GLOBAL, SCIENCE-DRIVEN  
PHARMACEUTICAL COMPANY,  
TAKEDA IS COMMITTED TO  
**INNOVATION**

---

Takeda has diverse and rich statistical and quantitative expertise. Our Statistical & Quantitative Sciences Organization is best in class and strives to bring **BETTER HEALTH AND A BRIGHTER FUTURE** to patients through



INNOVATIVE TRIAL AND  
PROGRAM DESIGN

---

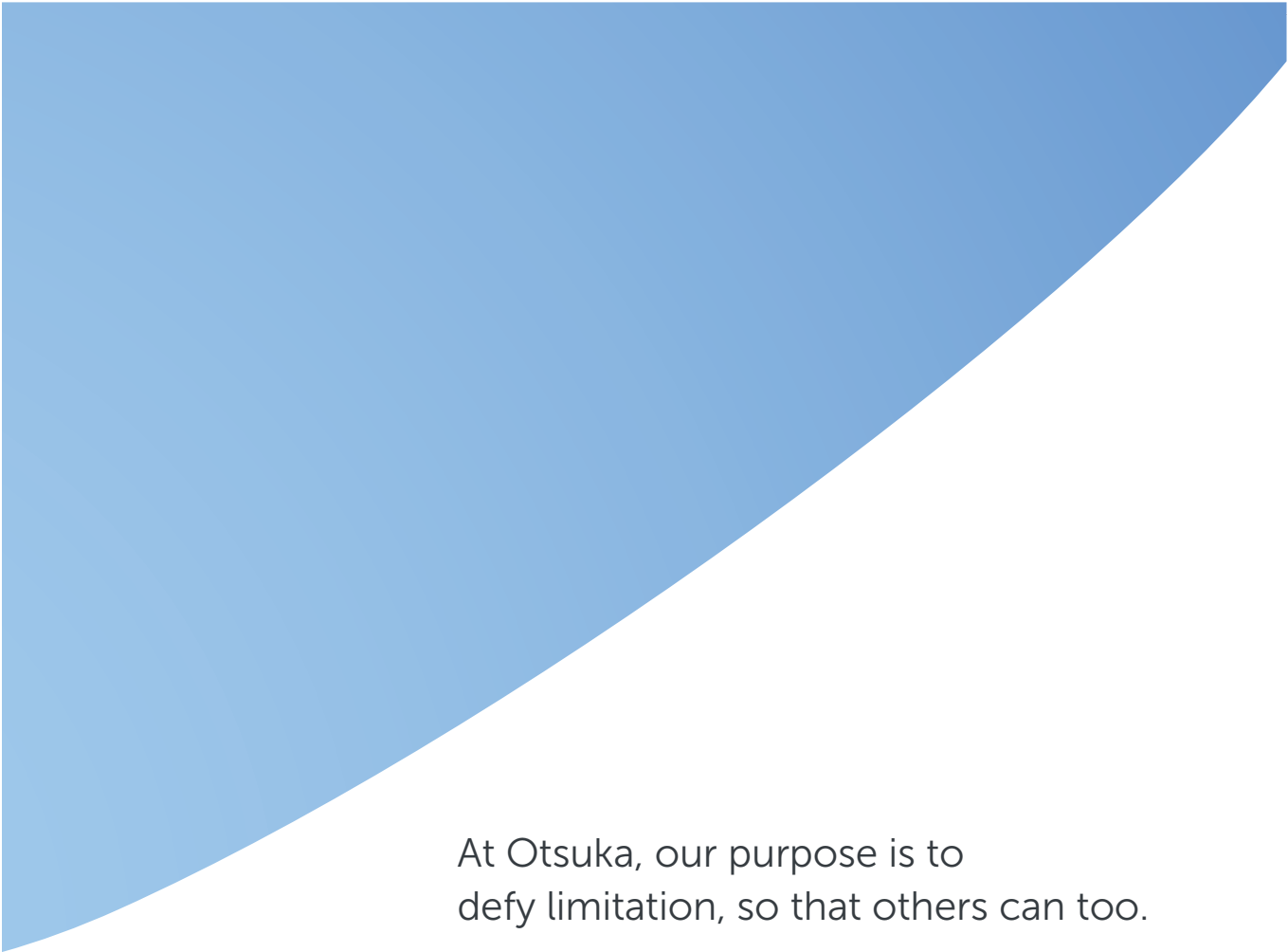


ADVANCED STATISTICAL AND  
QUANTITATIVE SCIENCES METHODOLOGY

---



NOVEL ANALYTICS FOR REAL  
WORLD DATA AND EVIDENCE



At Otsuka, our purpose is to  
defy limitation, so that others can too.

We have an unwavering belief in going above and beyond—under any circumstances—for patients, families, providers, and each other. This deep-rooted dedication drives us to uncover answers to complex, underserved medical needs, so that patients can push past the limitations of their disease and achieve more than they thought was possible.

Using our analytical expertise through Biostatistics and Data Science and our passion for drug development, we advance clinical research and bring innovative medicines and better products that promote health and wellbeing worldwide.



[in](#) Let's connect  
[@OtsukaUS](#)  
[www.otsuka-us.com](#)