

ASA / JSM 2010

Wireless Internet / Log-in Instructions

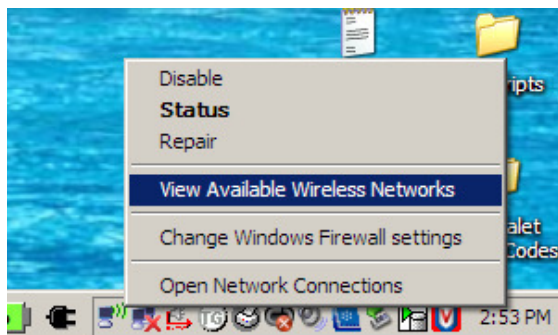
*Please note that our current packages are intended for casual use of the Internet only.
For Exhibitors, we recommend a Wired Internet 2Mbps Service (bandwidth guaranteed).*

**Current packages can provide a connection «UP to 512Kbps»
Not dedicated "shared" - NO bandwidth is guaranteed**

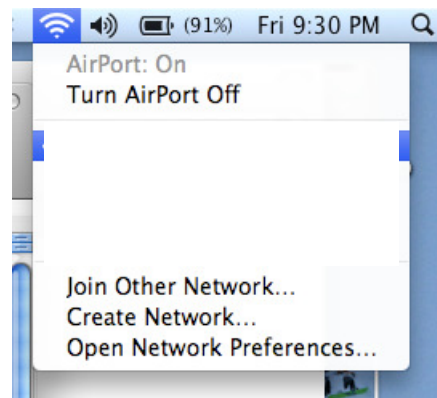
Rate per connection: 1 day: \$14.95 – 3 days: \$27.95 – 5 days: \$34.95

Step 1: Open wireless connection and view available wireless networks

PC user

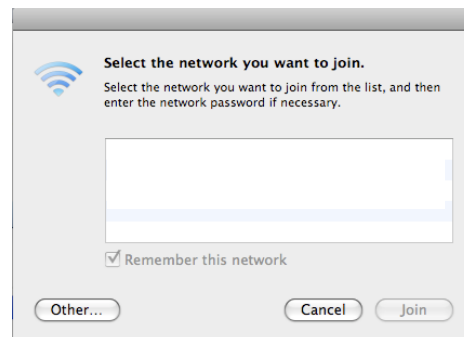
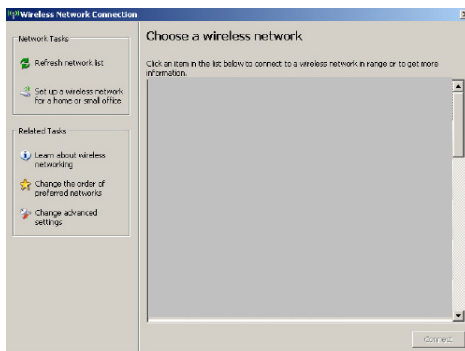


MAC user



Step 2: Connect to VCC_Wi-Fi

If you do not see VCC_Wi-Fi network you can also click on Join Other Network

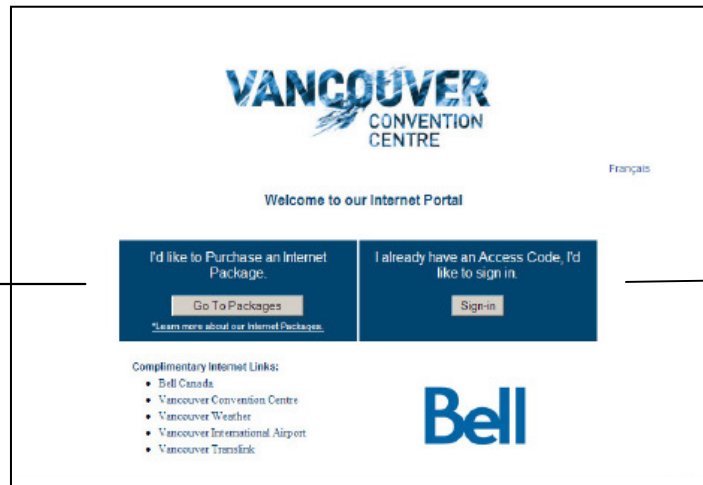


WiFi Disclaimer

We are pleased to provide this WiFi service for your use at the Vancouver Convention Centre. However, please note that some older computers and wireless cards may work fine in one place, but do not support roaming from one location to another. This is a limitation of older software drivers and is usually resolved by either updating your drivers, resetting your Wifi connection, or in some cases resetting your computer when you move to an alternate location. Most devices manufactured mid 2007 or later do not experience problems when roaming.

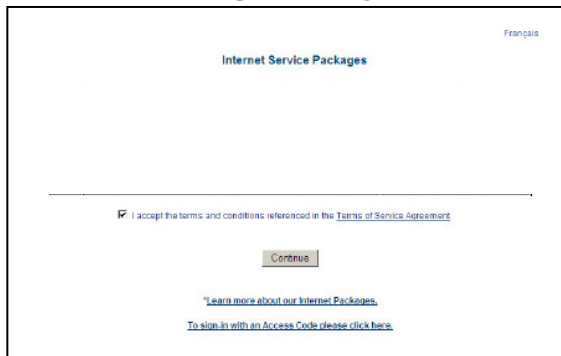
Step 3: Open your Internet browser

Click here to purchase a package via a credit card payment



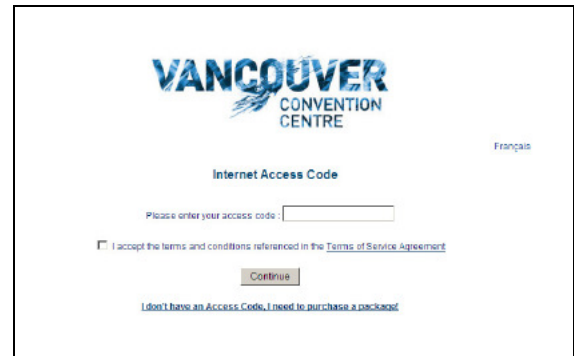
Click here if you already have a pre-assigned "Access Code"

Select a package

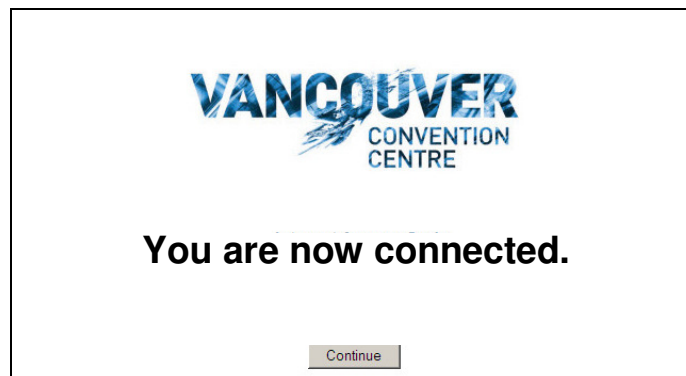


Provide your credit card info and accept the agreements then click on continue

Access Code



Enter your access code and accept the agreements then click continue



WiFi Disclaimer

We are pleased to provide this WiFi service for your use at the Vancouver Convention Centre. However, please note that some older computers and wireless cards may work fine in one place, but do not support roaming from one location to another. This is a limitation of older software drivers and is usually resolved by either updating your drivers, resetting your Wifi connection, or in some cases resetting your computer when you move to an alternate location. Most devices manufactured mid 2007 or later do not experience problems when roaming.