

abbvie

GRAPHICS FOR THE ANALYSIS AND CLINICAL REVIEW OF SAFETY DATA

Aimee Cyr
Assistant Director
AbbVie, Inc.

27 September 2017



Acknowledgments

The support of this presentation was provided by AbbVie. AbbVie participated in the review and approval of the content.

Aimee Cyr is an employee of AbbVie, Inc.

Some graphics were created using data available on CTSPedia.org.

Overview

Graphical presentations of safety data are essential for understanding the safety of products in the clinical setting.

- Volume
- Subtlety
- Dimensionality

Overview

Today's discussion will focus on using graphics to depict:

- The Basics
- The Drill Down
- The Full Picture

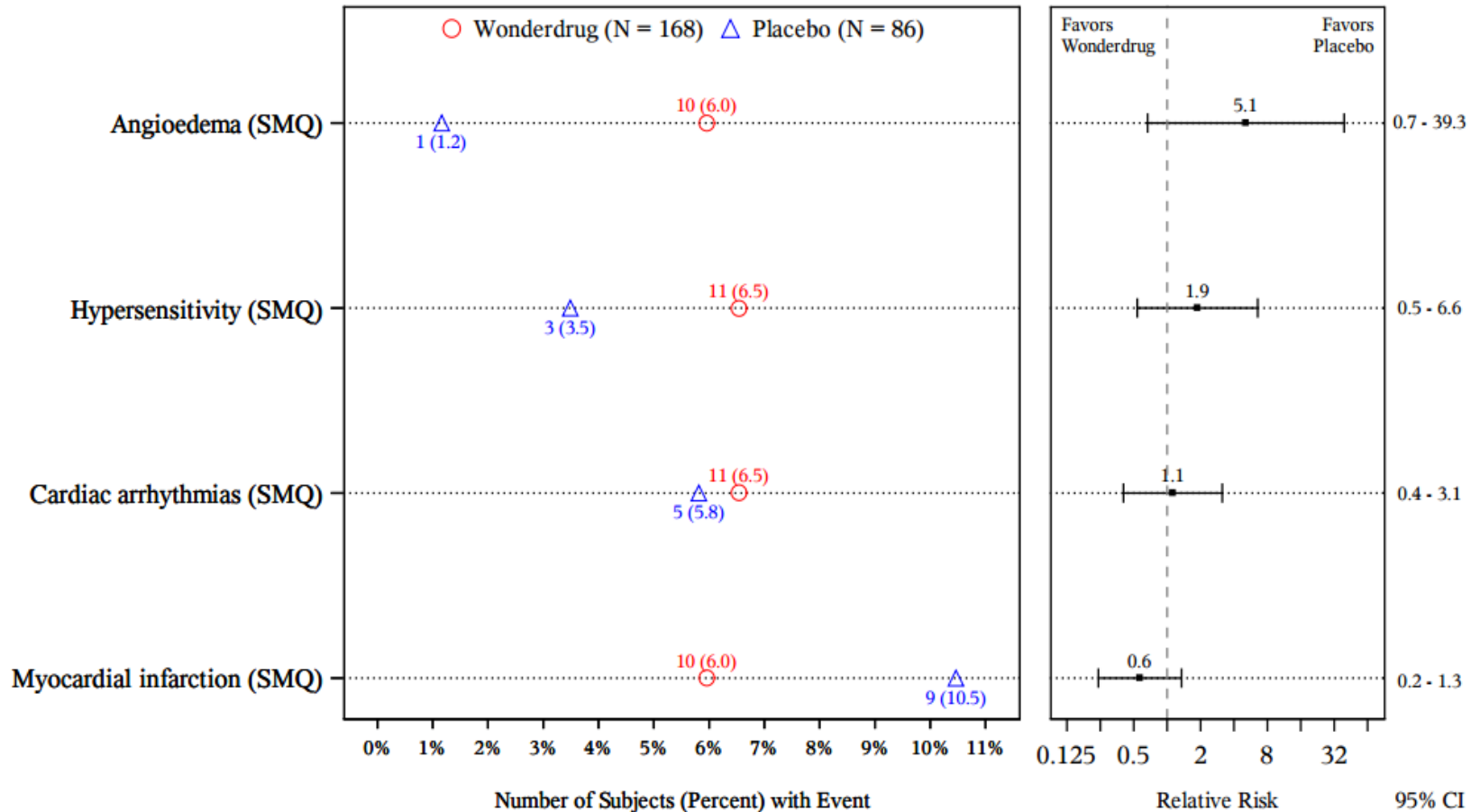
abbvie

THE BASICS

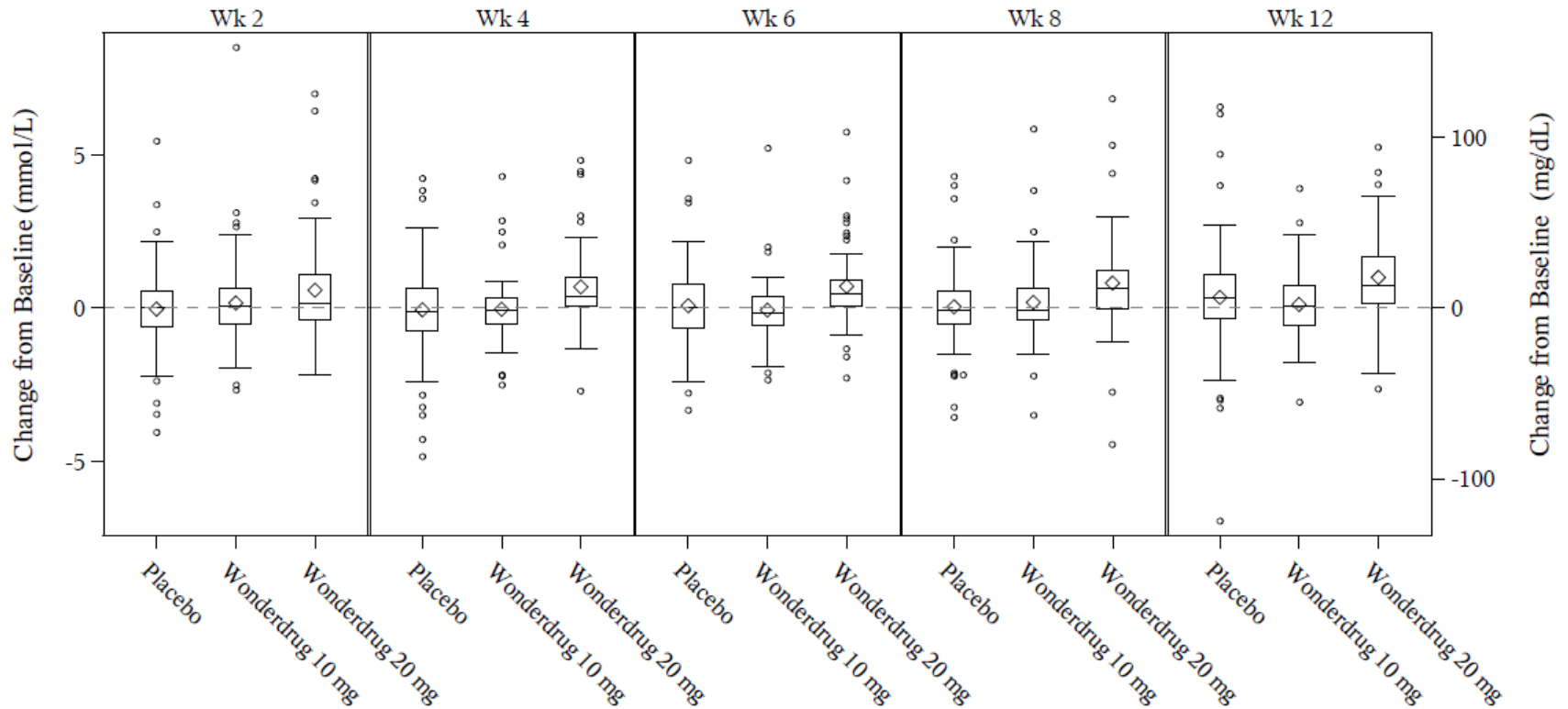
Standard plots for adverse events, labs,
vital signs and ECGs



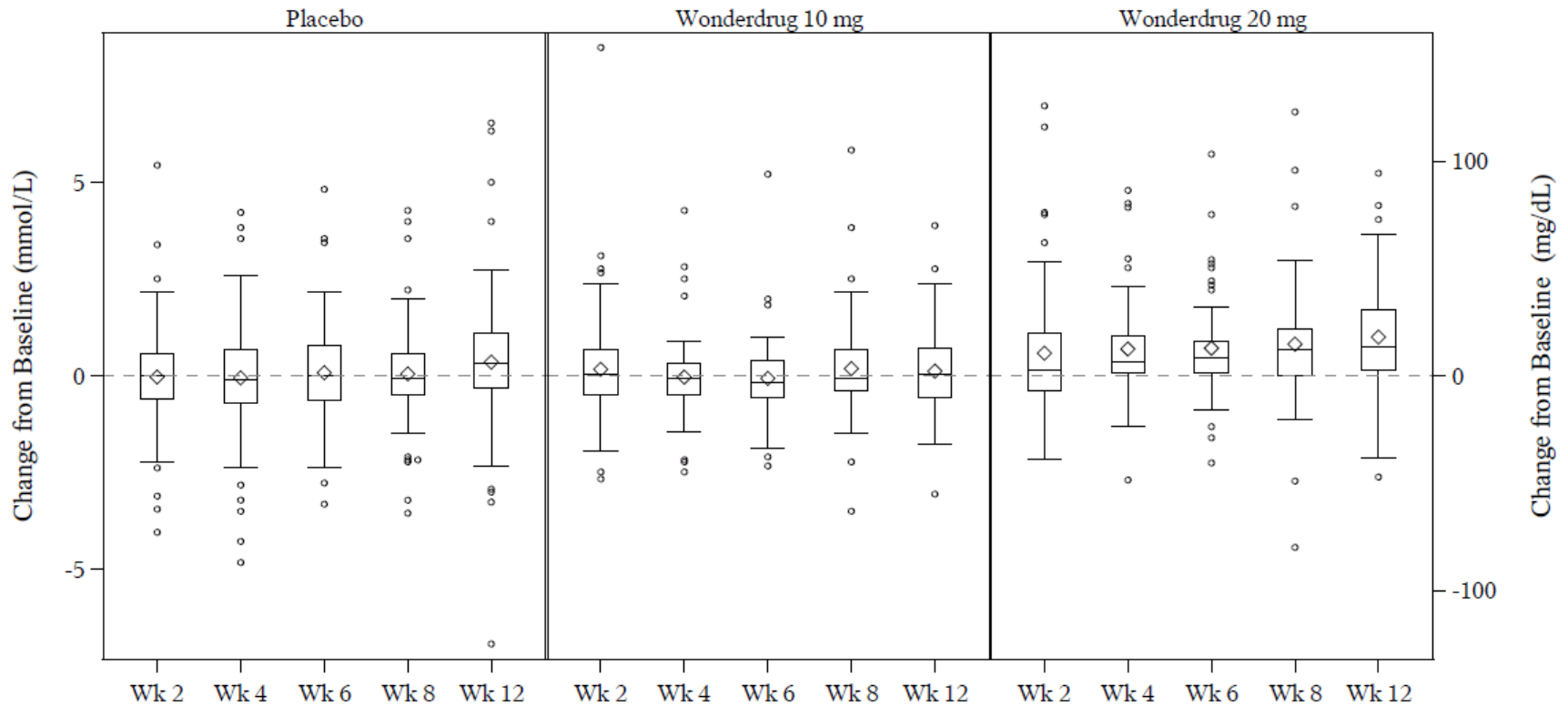
Incidence + Forest Plot for Binary Endpoints



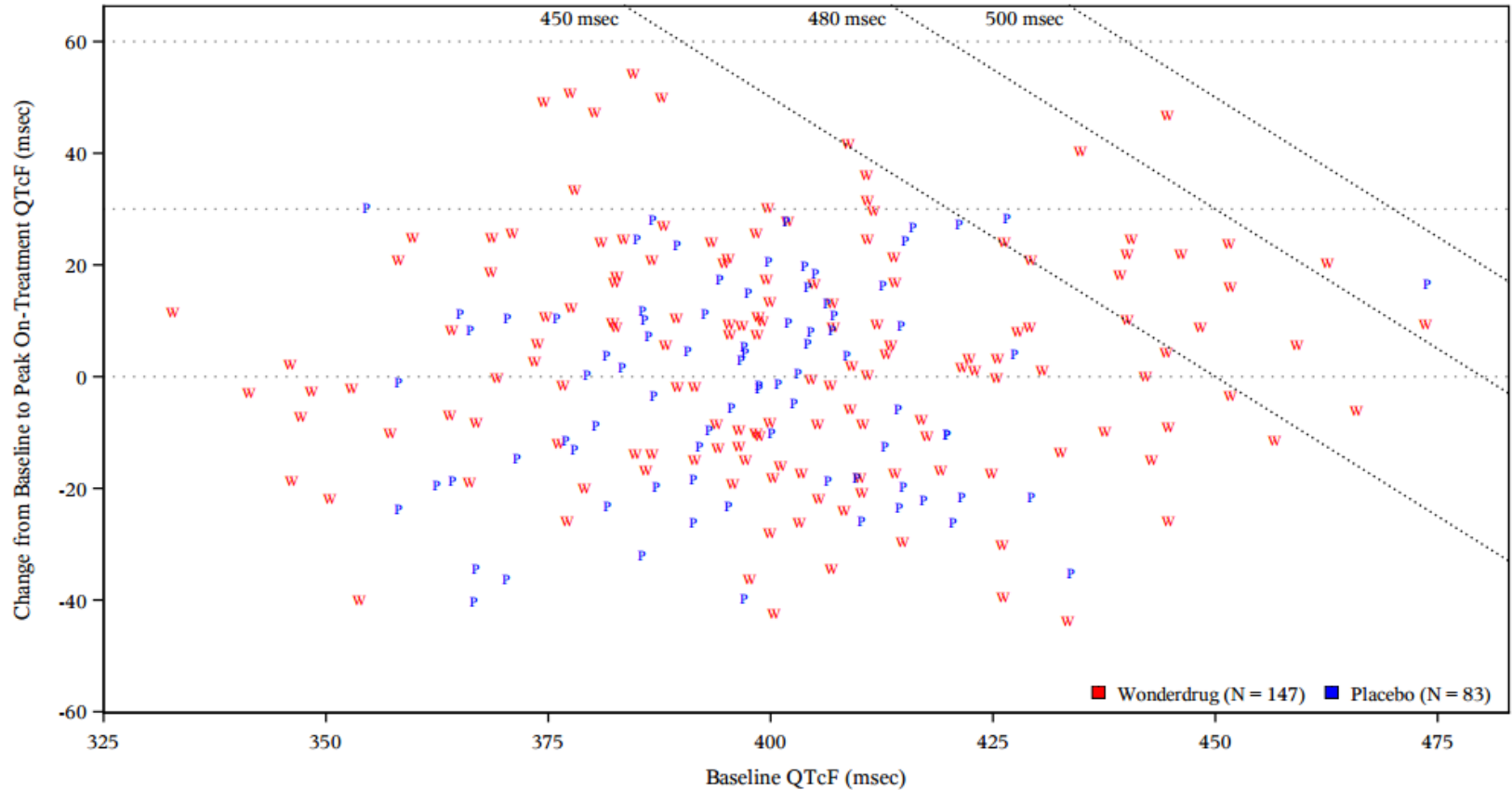
Box Plots for Continuous Endpoints by Visit and Treatment



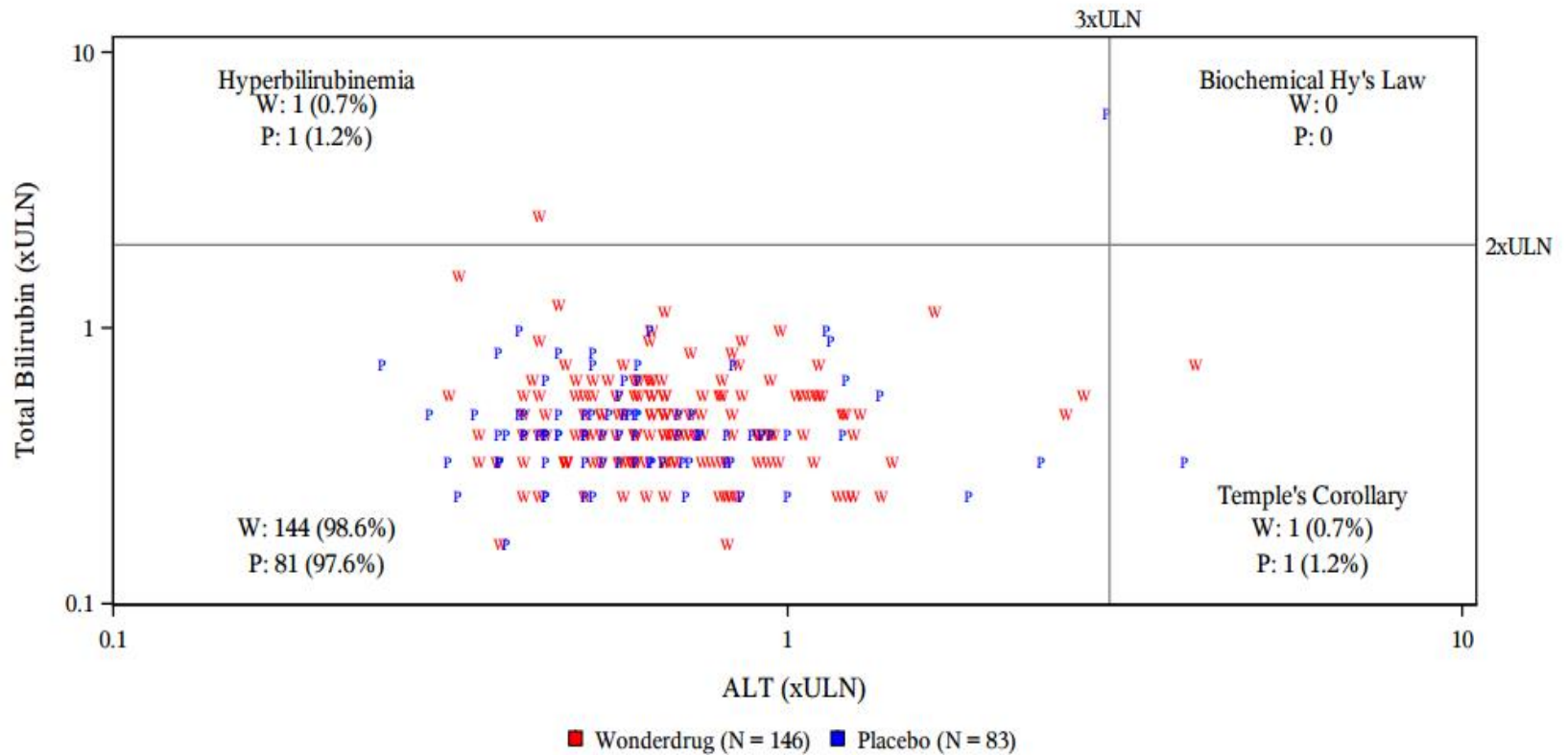
Box Plots for Continuous Endpoints by Treatment and Visit



Scatterplot with Reference Lines for Clinically Important Values



Evaluation of Drug-Induced Liver Injury (eDISH) Plot



abbvie

THE DRILL DOWN

Event charts for exploring patterns in events



Event Charts

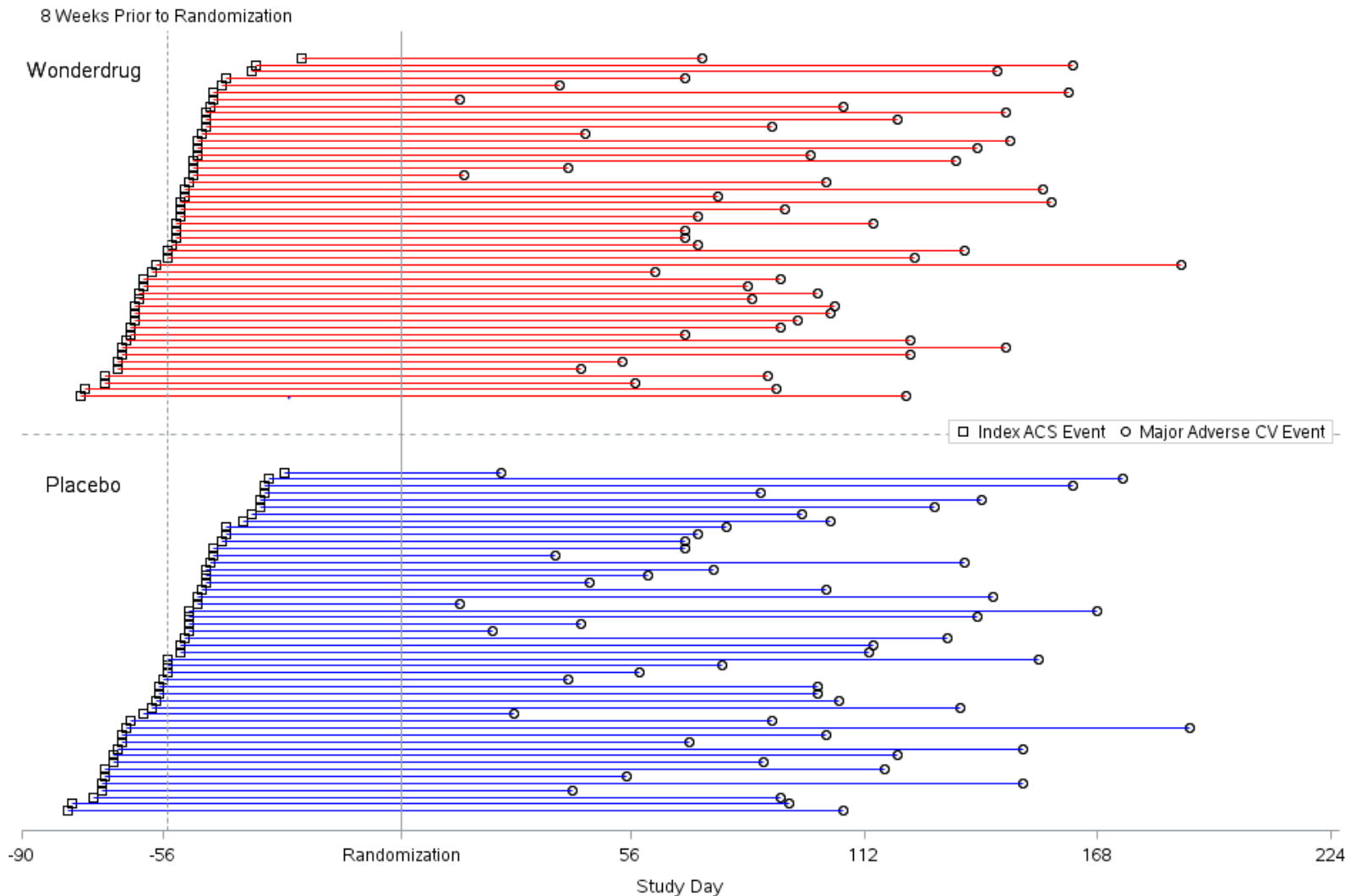
Explore event patterns by displaying all events for each subject on a single line

- Plot the entire population or relevant subgroups
- Shows timing/duration of events
- Can reveal temporal relationship of different events
- Proper sorting order can assist interpretation

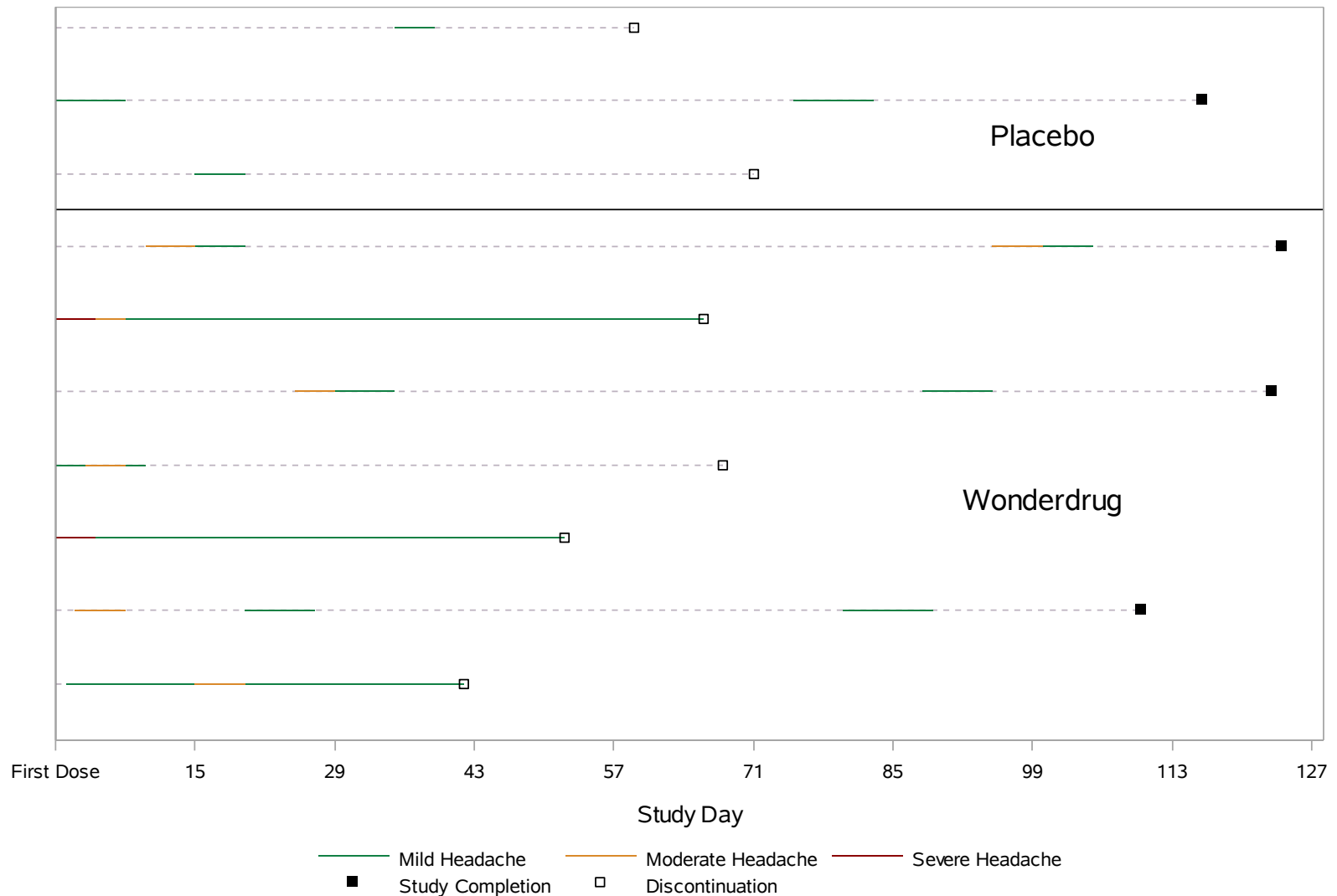
Event Chart to Show Relative Timing of Events

- Clinical question: Is time between index event and randomization correlated with time from randomization to first endpoint event?
- Each subject is depicted by a line from study day of index event to study day of first endpoint event
- Vertical reference lines depict randomization and 8 weeks pre-dose
- Sorting is critical to answer the clinical question – sort by time from index event to randomization and check for pattern in time from randomization to first endpoint event

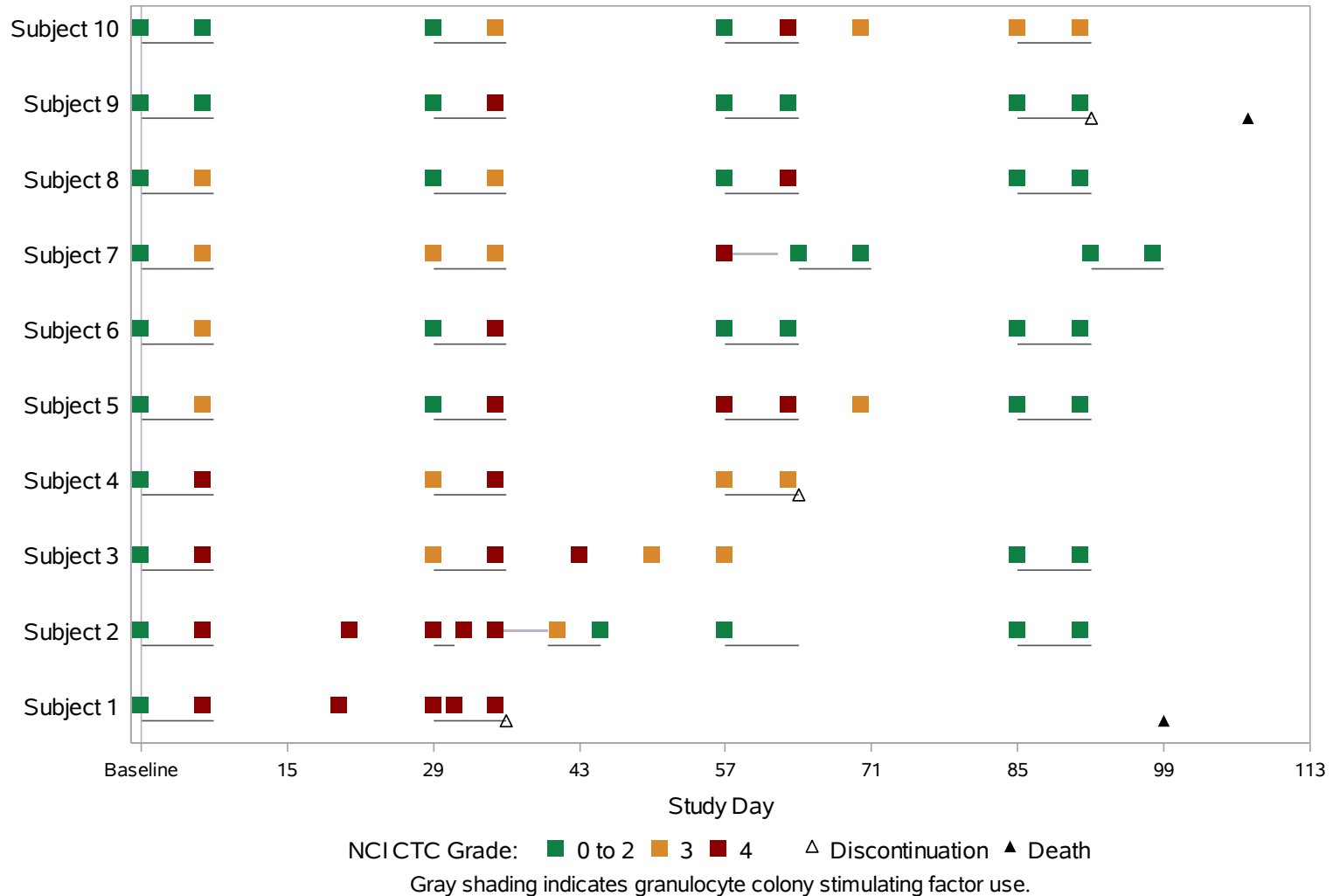
Event Chart to Show Relative Timing of Events



Event Chart (Swimmer Plot) to Show Event Severity by Time



Event Chart to Show Lab Toxicity Grades (NCI CTC) by Time



abbvie

THE FULL PICTURE

Patient profile plots to explore each case

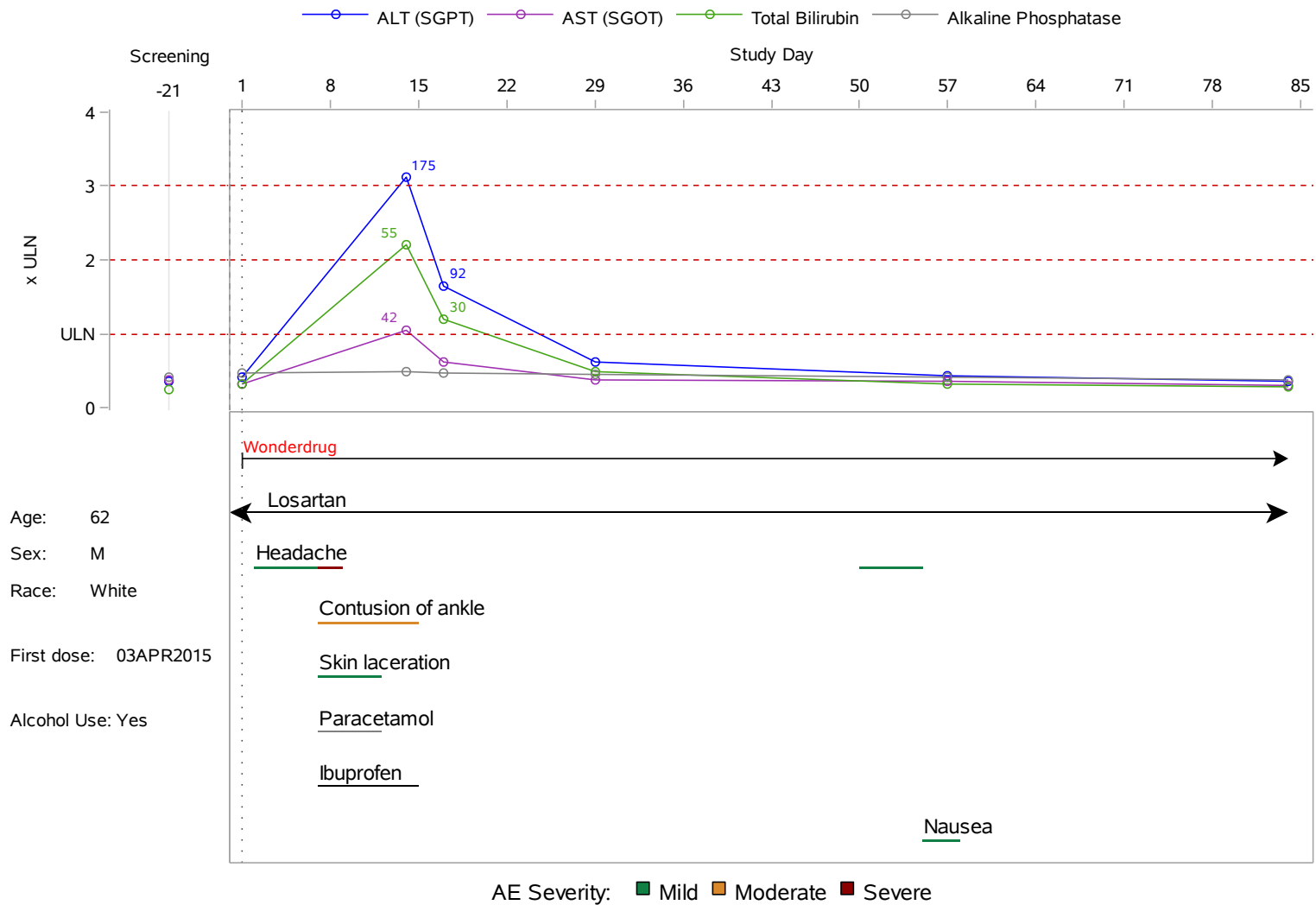


Patient Profiles

Visually display multiple data types for a single subject

- Can include continuous data (labs, VS, ECGs) alongside AEs, medications, hospitalizations, etc.
- Assists in clinical understanding of an event
- Can be used to clinically adjudicate events
- Useful addition to narratives
- Design can be customized for data relevant to event of interest

Patient Profile Plot – Labs, AEs, Medications, Study Drug



abbvie

SUMMING UP



Conclusion

- Graphics facilitate the understanding of product safety in the clinical setting
- SAS and R programs are available (PhUSE, CTSPedia, etc)
- Start with The Basics
- Drill Down and get The Full Picture using customized presentations designed in consultation with clinical colleagues

abbvie