

2018 JOINT STATISTICAL MEETINGS

# OPPORTUNITIES GUIDE & PROSPECTUS

- ADVERTISE
- EXHIBIT
- RECRUIT
- SPONSOR



**Vancouver, British Columbia, Canada**

July 28-August 2, 2018



## OVERVIEW

The American Statistical Association invites you to the 2018 Joint Statistical Meetings! We welcome sponsors, exhibitors, recruiters, and advertisers to the largest annual gathering of statisticians and data scientists in North America, with more than 6,500 attending.

Reach attendees from the world's major statistical societies:

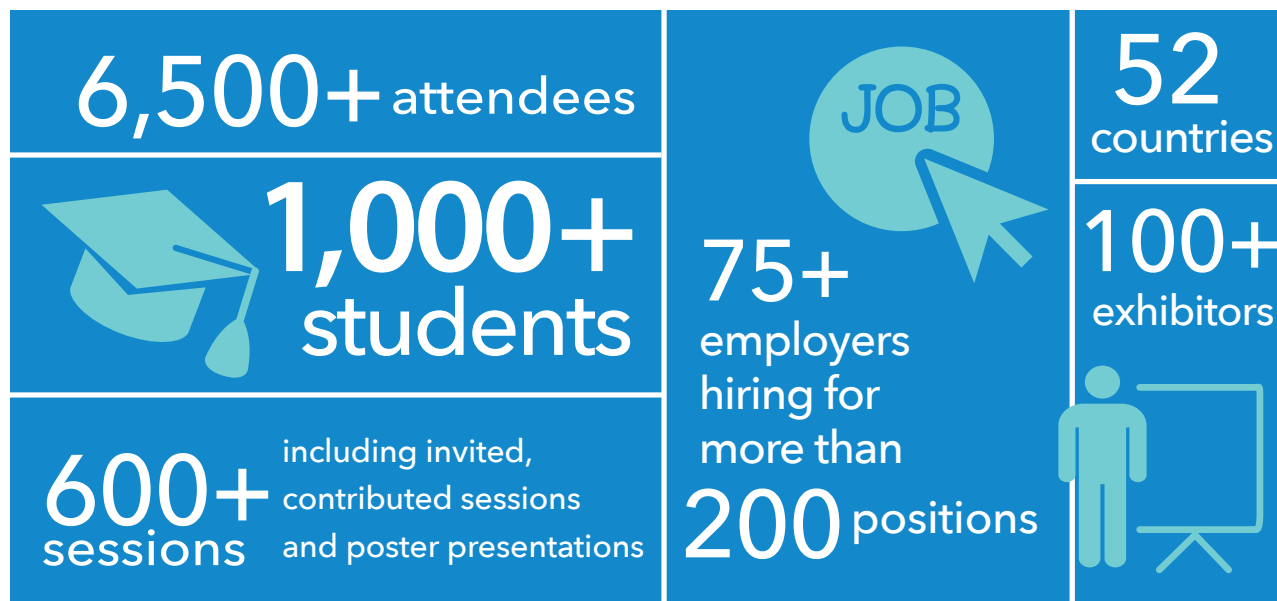
- \*American Statistical Association
- \*International Biometric Society (ENAR and WNAR)
- \*Institute of Mathematical Statistics
- \*Statistical Society of Canada
- International Chinese Statistical Association
- International Indian Statistical Association
- Korean International Statistical Society
- International Society for Bayesian Analysis
- Royal Statistical Society
- International Statistical Institute

\*Indicates the founding societies of JSM

## JSM ATTENDANCE

2017	Baltimore, Maryland	6,500
2016	Chicago, Illinois	7,200
2015	Seattle, Washington	6,800
2014	Boston, Massachusetts	6,800
2013	Montréal, Québec	6,000
2012	San Diego, California	6,300

JSM is one of the **broadest conferences**, with topics ranging from statistical applications, methodology, and theory to the expanding boundaries of statistics such as analytics and data science.



# SPONSORSHIP STATUS

How do you get recognized at JSM? Every financial commitment you make—recruiting, advertising, exhibiting, and sponsoring events—counts toward your JSM sponsorship status. JSM sponsors enjoy enhanced recognition!

	PLATINUM \$25,000 combined investment	GOLD \$10,000 combined investment	SILVER \$5,000 combined investment
Listing in the July and August issues of <i>Amstat News</i> , reaching almost 19,000 members of the American Statistical Association	✓	✓	✓
Exhibit booth signage indicating your status	✓	✓	✓
Onsite JSM signage featuring all sponsoring companies	✓	✓	✓
Acknowledgement on the JSM website	✓	✓	✓
Preferential booth space in the exhibit hall	✓	✓	
Acknowledgement on the JSM website, including a link to your company website	✓		
A \$2,000 investment credit toward Platinum status for the subsequent JSM	✓		
Social media recognition <i>All event-based sponsorships will be recognized in event tweets</i>	✓	✓	✓

## IMPORTANT DATES

### FEBRUARY 16, 2018

**Sponsors:** Deadline for Logo to Appear in JSM Registration Book

### MARCH 9, 2018

**Exhibitors:** Booth Payment Deadline

### MARCH 30, 2018

**Advertisers:** Ad Space Reservation Deadline

### APRIL 10, 2018

**Sponsors:** Deadline for Logo to Appear in JSM Quick Guide

### MAY 1, 2018

**Sponsors, Recruiters, Exhibitors:** JSM Registration and Housing Reservations Open

**Advertisers:** Ad Artwork Deadline

### JUNE 4, 2018

**Sponsors:** Logo for Special Onsite Signage Deadline

### JUNE 21, 2018

**Sponsors, Recruiters, Exhibitors:** Hotel Reservation Deadline

**Advertisers:** Digital Advertisement Deadline

### JULY 20, 2018

**Sponsors, Recruiters, Exhibitors:** Online Registration Deadline

## QUESTIONS?

### ADVERTISERS & EXHIBITORS

**CLAUDINE DONOVAN**

Advertising and Exhibits Manager  
American Statistical Association  
732 North Washington Street  
Alexandria, VA 22314  
[claudine@amstat.org](mailto:claudine@amstat.org)

### SPONSORS & EMPLOYERS

**AMY FARRIS**

Director, Marketing and  
Membership Development  
American Statistical Association  
732 North Washington Street  
Alexandria, VA 22314  
[amy@amstat.org](mailto:amy@amstat.org)

## HOUSING

Information about JSM hotel reservations will be available at [ww2.amstat.org/meetings/jsm/2018/housing.cfm](http://ww2.amstat.org/meetings/jsm/2018/housing.cfm) on May 1, 2018. We encourage you to reserve early as our housing block fills quickly.



# ADVERTISE

As a JSM advertiser,  
you will ...

- Reach the entire statistical community
- Have your ad viewed throughout the meetings
- Send your ad back with participants to offices and libraries



**JSM QUICK GUIDE ADS** reach every registrant. Included in every conference bag, the Quick Guide contains everything attendees need to know during the meetings, as well as the dates, times, and locations for sessions; floor plans; and exhibitor information.

**ONLINE SIDEBAR ADS** link to your company's website. Contact Claudine Donovan for this option.

**A CONFERENCE BAG INSERT** allows you to place an insert in the conference bag of every attendee.

**THE ATTENDEE MAILING LIST** comes directly from the JSM registration database and is available prior to the meetings. Typically including more than 3,000 opted-in names, it is a great way to let attendees know ahead of time about your products or to extend special invitations.

**A DIGITAL AD** facilitates getting your message out on high-resolution displays throughout the convention center. This is a great opportunity to display multimedia messaging to more than 6,000 statisticians.

## RATES

QUICK GUIDE	Cover \$2,500
	Full-Page \$1,500 (7" x 10")
	Half-Page \$950 (7" x 4 7/8")
ONLINE SIDEBAR AD	\$850 for 30 days / 250px x 100px
ATTENDEE MAILING LIST	\$800 +
CONFERENCE BAG INSERT	\$2,000
DIGITAL AD	\$2,500

All ads are four-color. Agency discounts will be honored.

To reserve your ad space, return the Advertiser/Exhibitor Commitment Form before March 30, 2018. Telephone orders are not possible. Artwork is due May 1, 2018.

All covers must use process color. Artwork should be a minimum of 300 dpi and at least 150 lpi. We accept artwork in TIFF, EPS, and PDF formats. All fonts must be embedded, and line art should be at least 1,200 dpi. All artwork must be accompanied by a hard copy of the advertisement.

# EXHIBIT

The **JSM EXPO** is a focal point for learning about, networking with, and celebrating the statistical community. Join us to reach a powerful audience of buyers.

## Exhibit at JSM to ...

- Generate leads
- Meet buyers face-to-face
- Showcase your products and services
- Stay ahead of the competition
- Keep up with industry trends
- Reinforce long-term business relationships
- Provide attendees the opportunity to observe and learn about state-of-the-art products and services related to the statistics industry

## Each exhibit booth includes:

- A 10' x 10' booth with an 8' drape back wall and 3' drape sidewalls
- ID sign
- Three exhibitor badges\*
- Exhibitor synopsis listed in the conference app
- Daily cleaning of aisles and common areas



\*Additional badges are available for \$50 each.

## EXHIBITING FEES

1st End Booth	\$2,100
2nd End Booth	\$2,000
Additional End Booths	\$1,900
1st In-Line Booth	\$2,050
2nd In-Line Booth	\$1,950
Additional In-Line Booths	\$1,800

A deposit of \$1,000 per booth will reserve your space. The balance must be paid by March 10, 2018.

Exhibitors must be present at all times when the EXPO is open. Exhibitor badges do not provide entry into sessions.

## ADVERTISERS & EXHIBITORS

### CLAUDINE DONOVAN

Advertising and Exhibits Manager  
American Statistical Association  
732 North Washington Street  
Alexandria, VA 22314  
[claudine@amstat.org](mailto:claudine@amstat.org)

## OPENING MIXER IN THE EXPO!

On Sunday night, the **Opening Mixer** will once again be hosted in the EXPO! Order refreshments for your booth and plan to meet and greet JSM 2018 attendees. Those who order by the deadline in the exhibitor kit will be included on the EXPO refreshment map. Make sure to bring attendees to your booth by ordering in advance!



## JSM EXPOS HAVE WELCOMED EXHIBITORS FROM:

### INDUSTRY—INCLUDING SOFTWARE AND CONSULTING

Amazon  
Berry Consultants  
Cytel  
IBM  
JMP software from SAS  
Lyft  
Minitab  
Salford Systems  
SAS Institute

StataCorp  
Westat  
Wolfram Research  
XLSTAT  
Zillow

### PUBLISHING

CRC Press/Taylor & Francis Group  
Cambridge University Press  
Oxford University Press  
Pearson

Sage Publishing  
Springer  
Wiley

### EDUCATION & RESEARCH

Apex Life Sciences  
Course.Work  
Eli Lilly  
Mathematica  
Takeda Pharmaceuticals  
NC State University

# JSM EXPO SCHEDULE

## EXHIBITOR MOVE-IN

**SATURDAY, JULY 28** ..... 8:00 a.m. – 5:00 p.m.

**SUNDAY, JULY 29** ..... 8:00 a.m. – 12:00 p.m.

## SHOW MANAGEMENT WALK-THROUGH

**SUNDAY, JULY 29** ..... 12:00 p.m. – 12:30 p.m.

## EXHIBITOR TEAR-DOWN

**WEDNESDAY, AUGUST 1** ..... 2:31 p.m. – 8:00 p.m.

# EXPO HOURS

**SUNDAY, JULY 29** ..... 1:00 p.m. – 6:00 p.m.

**OPENING MIXER!** ..... **8:30 p.m. – 10:30 p.m.**

**MONDAY, JULY 30** ..... 9:00 a.m. – 5:30 p.m.

**TUESDAY, JULY 31** ..... 9:00 a.m. – 5:30 p.m.

**WEDNESDAY, AUGUST 1** ..... 9:00 a.m. – 2:30 p.m.



## GOVERNMENT

Bureau of Economic Analysis

Bureau of Labor Statistics

U.S. Food and Drug Administration

National Science Foundation

National Security Agency

U.S. Department of Agriculture

U.S. Census Bureau

## STATISTICAL SOCIETIES

American Association for the Advancement of Science

American Mathematical Society

American Statistical Association

Society for Industrial and Applied Mathematics

Royal Statistical Society

Statistical Society of Canada

## RECRUITING

Green Key Resources

Penfield Search Partners

Personify

# RECRUIT

The **JSM Career Service** offers a full-service recruiting facility, including online registration, private interview booths available for reservation, and an online candidate search with profiles and résumés for hundreds of applicants.

Research and contact candidates in advance and arrive prepared to conduct interviews. The JSM Career Service does not operate like a traditional career fair; interviews are by appointment only!

Online registration will open May 1, 2018.

## CAREER SERVICE HOURS

**SATURDAY, JULY 28**.... 9:00 a.m. – 5:00 p.m.

*Executive Suite and Private Booth set-up, badge pick-up, and onsite registration*

**SUNDAY, JULY 29**.... 1:00 p.m. – 6:00 p.m.

**MONDAY, JULY 30**... 8:00 a.m. – 5:30 p.m.

**TUESDAY, JULY 31** ... 8:00 a.m. – 5:30 p.m.

**WEDNESDAY,  
AUGUST 1** ..... 8:00 a.m. – 2:30 p.m.

## SPONSORS & EMPLOYERS

**AMY FARRIS**

Director, Marketing and Membership Development  
American Statistical Association

732 North Washington Street, Alexandria, VA 22314  
[amy@amstat.org](mailto:amy@amstat.org)

## FEES

### EXECUTIVE SUITE REGISTRATION

ASA Organizational Member	\$3,000
Nonmember	\$3,500

### GENERAL EMPLOYER REGISTRATION

ASA Organizational Member	\$1,500
Nonmember	\$1,800

### PRIVATE INTERVIEW BOOTH (ADD-ON ONLY)

ASA Organizational Member	\$1,100
Nonmember	\$1,400

### ONLINE CANDIDATE ACCESS ONLY

ASA Organizational Member	\$1,000
Nonmember	\$1,500

Employer fees include registration for the Career Service only; they do not include general meeting registration. The ASA Organizational Member rate is extended to organizational members only; individual membership does not qualify for this discount.

[ww2.amstat.org/meetings/jsm/2018](http://ww2.amstat.org/meetings/jsm/2018)

## THREE EMPLOYER REGISTRATION OPTIONS:

### GENERAL EMPLOYER REGISTRATION

For attending and non-attending organizations interested in posting positions and having access to the online candidate search in advance of the conference

- Five distinct job postings in the online postings, available to all registered applicants
- Onsite access to the JSM Career Service for up to three representatives
- Onsite access to interview space daily, by reservation, for up to four hours per day
- Online access to a searchable database of applicants through September 30
- Advance, onsite, and post-JSM access to the online Career Service Message Center

### EXECUTIVE SUITE EMPLOYER REGISTRATION

All the benefits of General Employer Registration, plus

- A private, furnished booth for your exclusive use throughout the meeting. Your suite can comfortably accommodate your interviewee and up to three interviewers. Your suite includes a computer and printer for easy, immediate access to the applicant résumés and message center onsite.
- Up to 10 distinct job postings in the online postings, accessible to registered applicants.
- Onsite access for up to five representatives and three guests from your organization.
- Special recognition online and onsite, as well as credit toward the JSM sponsorship program.

### POST-JSM ONLINE ACCESS ONLY

For those employers who do not wish to register as non-attending employers and do not wish to post job positions, access is still available to our applicant database post-JSM through September 30.

### ADD-ON

#### PRIVATE INTERVIEW BOOTH REGISTRATION

Don't quite need an Executive Suite, but would like dedicated interview space? Already have an Executive Suite, but need additional interview space so you can hold multiple interviews at once? Consider adding a private interview booth to your employer registration. Gain the flexibility to schedule interviews without the need to reserve space on an hourly basis. Your curtained booth can comfortably accommodate your interviewee and up to two interviewers.



# SPONSOR

Become a **JSM sponsor** and show more than 6,500 attendees and exhibitors your support of the statistical community! Set your company apart as a strong advocate for the statistics profession.

Design a tailored package with your exhibit, advertising, Career Service, and sponsorships to optimize your visibility.

## SPONSORSHIP OPPORTUNITIES



Have a great idea for a **SPOTLIGHT VANCOUVER** event? Let us know, and we will arrange your sponsorship and take care of all the details for you!

### SPOTLIGHT VANCOUVER!

With a variety of scheduled events throughout the week, Spotlight Vancouver will bring traffic and energy to the EXPO. When you sponsor an event in the Spotlight, your organization will be highlighted in this special area of the hall and throughout conference materials.

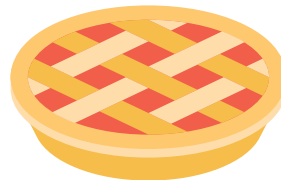
Have a great idea for a Spotlight Vancouver event? Let us know, and we will arrange your sponsorship and take care of the details for you!

#### Taste of Vancouver Kick-Off

Help us kick off Spotlight Vancouver Sunday afternoon with samples of area specialties like wild salmon sliders, porcini mushroom tarts, and BBQ duck spring rolls.

**Exclusive Sponsorship:** \$9,000

**Co-Sponsorship:** \$3,000  
(Co-Sponsor Limit: 3)



#### Tasty Vancouver Fruit Tartelettes

No time to venture to Granville Island?

Attendees can enjoy fresh samples of fruit tartelettes made from local area fruit and berries (while supplies last) and mingle with other attendees.

**Exclusive Sponsorship:** \$4,000

**Co-Sponsorship:** \$2,000  
(Co-Sponsor Limit: 2)

### JSM Coffee House

Provide attendees with a fresh cup of coffee from Vancouver's local organic, fair-trade coffee maker, Moja Coffee. Attendees will enjoy the feature house blend, "Rainforest Alliance Sumatra," or choose from a variety of imported teas.



**Exclusive Sponsorship (three days):**  
\$10,000

**Co-Sponsorship (per day):** \$5,000  
(Co-Sponsor Limit: 3)

### JSM Energy Fix

Provide attendees with a healthy alternative to your standard coffee break fare and let them power up with assorted smoothies and energy bars.

**Exclusive Sponsorship:** \$7,500

### Popcorn Breaks

Offer a fresh bag of warm popcorn to hungry attendees and make use of the Spotlight Vancouver space.

**Exclusive Sponsorship (three days):** \$9,000

**Co-Sponsorship (per day):** \$3,000 (Co-Sponsor Limit: 3)

## PACKAGE EXAMPLES

### PLATINUM \$25,000 COMMITMENT

Exclusive Sponsor of the Dance Party (\$10,000)

Exclusive Sponsor of the Professional Development Program (\$10,000)

Executive Suite in the JSM Career Service (\$3,500)

Conference Bag Insert (\$2,000)

### GOLD \$10,000 COMMITMENT

Exclusive Sponsor of the JSM Opening Mixer (\$10,000)

### SILVER \$5,000 COMMITMENT

One-Day ASA Professional Development Sponsor (\$2,500)

Conference Digital Ad (\$2,500)

### B.C. Microbrew Tasting

Attendees will sample British Columbia brews served in personalized tasting cups with your corporate logo!

**Exclusive Sponsorship:** \$6,000



### B.C. Wine Tasting

Attendees will enjoy British Columbia (Okanagan Valley) wines in personalized tasting cups with your corporate logo!

**Exclusive Sponsorship:** \$6,000

## ENHANCE THE JSM EXPERIENCE

---

### JSM Conference Bags

Take advantage of one of the most prominent sponsorships available at JSM. Your logo will be on the conference bag given to every registrant.

**Exclusive Sponsorship:**  
\$30,000

**Co-Sponsorship:** \$16,000  
(Co-Sponsor Limit: 2)

### JSM App and Mobile Program



Help attendees navigate JSM by supporting the conference app and mobile program. Your logo will be prominently featured.

**Exclusive Sponsorship:**  
\$10,000

### EXPO Charging Stations

Sponsor an EXPO charging station and have your logo seen by attendees plugging in a variety of phones and other hand-held electronics.

**Exclusive Sponsorship:** \$8,000  
**Per Station:** \$2,000

### Cyber Center

With your contribution, more than 6,500 attendees will be able to access the internet at our onsite cyber center. Sponsors will be recognized with onsite signage and on the screen of every computer in the center. Exclusive sponsorship also will include mouse pads with your corporate logo at every station.

**Exclusive Sponsorship:**  
\$10,000

**Co-Sponsorship:** \$5,000  
(Co-Sponsor Limit: 2)

### JSM WiFi

Attendees will be able to multitask with your support of WiFi! Your logo will be prominently featured on onsite signage and in program materials.

**Exclusive Sponsorship:**  
\$10,000

### Attendee Badge Lanyards

Have your logo prominently displayed on lanyards used by attendees to hold their name badges and tickets.

**Exclusive Sponsorship:**  
\$10,000

### JSM Photo Booth

Make memories for JSM attendees. Your logo will be included on each digital or printed photo! The photo booth can be integrated into the Opening Mixer or Dance Party.

**Exclusive Sponsorship:** \$3,000

### JSM Speaker Management Kiosks

Have your company logo displayed on kiosks throughout the convention center. More than 2,500 speakers use this system to have presentations ready to go in session rooms.

**Exclusive Sponsorship:**  
\$10,000

**Co-Sponsorship:** \$2,000  
(Co-Sponsor Limit: 5)

### Conference Pen

Have a pen with your logo on it in every attendee bag, distributed to more than 6,500 participants onsite at JSM.

**Exclusive Sponsorship:** \$6,000

## SPONSORS & EMPLOYERS

AMY FARRIS, Director, Marketing and Membership Development  
American Statistical Association  
732 North Washington Street, Alexandria, VA 22314  
[amy@amstat.org](mailto:amy@amstat.org)



### ASA Professional Development Program

The ASA's Professional Development Program includes short courses, computer technology workshops, and personal skills development offerings over four days and attracts more than 1,000 statisticians. Sponsor the entire duration or a single day. Sponsor logos are featured on Professional Development Program signage and in course binders.

**Exclusive Sponsorship:**  
\$10,000

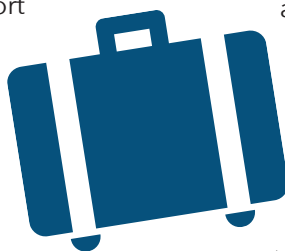
**Co-Sponsorship (per day):**  
\$2,500 (Co-Sponsor Limit: 4)

### JSM Child Care

**NEW 2018 OPPORTUNITY!**  
Show your support of JSM attendees juggling career and family. Your support will offset the cost to our attendees with little ones in tow, and your organization will be recognized in the online program. Your exclusive sponsorship will qualify you as a Silver Sponsor throughout the conference.

**Exclusive Sponsorship:** \$5,000

**Co-Sponsorship:** \$2,500  
(Co-Sponsor Limit: 2)



### JSM Luggage Storage

Make an attendee's day! Save them from lugging around their luggage at the end of the conference. Sponsor luggage storage on Wednesday, Thursday, or both!

**Exclusive Sponsorship (Wednesday & Thursday):** \$2,500

**Co-Sponsorship (per day):**  
\$1,500 (Co-Sponsor Limit: 2)

## SPONSOR A JSM EVENT

### JSM Opening Mixer

Make an early impression on attendees who come together for the biggest social event of JSM. Sponsors' corporate logos will be placed on cocktail napkins and signage at the event. Also, sponsors can exclusively use a designated Spotlight Vancouver space during the mixer.

**Exclusive Sponsorship:**  
\$10,000

**Co-Sponsorship:** \$5,000  
(Co-Sponsor Limit: 2)

### JSM First-Time Attendee Orientation

**NEW 2018 OPPORTUNITY!**  
Support this important event specifically planned to help first-time JSM attendees make the most of the conference. Hundreds of first-time attendees come to learn how to get involved in and navigate JSM.

**Exclusive Sponsorship:** \$5,000

### JSM Student Mixer

This is an opportunity for your company to show support for statistics scholars while they join their contemporaries for a fun-filled time. Typically attended by more than 700 students, this is the perfect way to gain exposure with new and upcoming talent! Sponsor representatives are welcome to attend!

**Exclusive Sponsorship:**  
\$10,000

**Co-Sponsorship:** \$5,000  
(Co-Sponsor Limit: 2)

For more information or  
to sponsor one of these  
opportunities, email  
[sponsor@amstat.org](mailto:sponsor@amstat.org)  
or return the **Sponsor  
Commitment Form.**



### JSM Dance Party

This high-profile and well-attended after party for the ASA President's Address and Fellows & Founders Recognition is a highlight of JSM! Held each year on Tuesday night, more than 700 conference attendees come to dance the night away.



**Exclusive Sponsorship:**  
\$10,000

**Co-Sponsorship:** \$5,000  
(Co-Sponsor Limit: 2)

### ASA Longtime Member Reception

This annual reception honors ASA members who have shown dedication to the association for 35 or more years. We expect more than 300 of our most faithful and distinguished members to attend. Show your support of the ASA, and these members in particular, by placing your name and logo on signage to be seen by attendees.

**Exclusive Sponsorship:**  
\$7,000

**Co-Sponsorship:** \$3,500

### ASA Awards Celebration and Editor Appreciation

The ASA will host an awards and editor appreciation celebration on Sunday evening. Show your support of this distinguished group of attendees by sponsoring this event.

**Exclusive Sponsorship:**  
\$5,000

### Student Chapter Workshop

**NEW 2018 OPPORTUNITY!**  
Show your support of student chapters. This event brings together student chapter leaders from around the country to brainstorm and learn from each other. Your contribution will support the event and provide light refreshments. A representative from your organization will also be invited to make brief comments at the beginning of the workshop.

**Exclusive Sponsorship:**  
\$3,000

**Co-sponsorship:** \$1,500  
(Co-Sponsor Limit: 2)

# JSM2018 VANCOUVER

## SPONSOR/CAREER SERVICE COMMITMENT FORM

Select from the options below to expand your onsite profile at JSM 2018! See the JSM sponsorship website at [www.amstat.org/jsmopportunities](http://www.amstat.org/jsmopportunities) for the most up-to-date information and the latest availability.

- ☐ CAREER SERVICE RECRUITER REGISTRATION  
(circle registration type)  
EXECUTIVE SUITE: \$3,000 Organizational/\$3,500 Nonmember  
GENERAL: \$1,500 Organizational/\$1,800 Nonmember
- ☐ ADD A PRIVATE INTERVIEW BOOTH  
\$1,100 Organizational/\$1,400 Nonmember
- ☐ CANDIDATE ACCESS ONLY (AVAILABLE AFTER JSM)  
\$1,000 Organizational/\$1,500 Nonmember

### PAYMENT FORM

Contact

Organization

Address

City State/Province

ZIP Country

Email

Phone

### PAYMENT

Total Amount Due: \_\_\_\_\_

☐ Check Enclosed ☐ American Express ☐ Discover

☐ MasterCard ☐ VISA

Card Number

Expiration

Name on Card

Security Code

Authorized Signature

SPONSORSHIP OPPORTUNITY	EXCLUSIVE	COSPONSORSHIP
<b>SPOTLIGHT VANCOUVER</b>		
Taste of Vancouver Kick-Off	\$9,000	\$3,000
Tasty Vancouver Fruit Tartelettes	\$4,000	\$2,000
JSM Coffee House	\$10,000	\$5,000 (per day)
JSM Energy Fix!	\$7,500	
Popcorn Breaks	\$9,000	\$3,000 (per day)
B.C. Microbrew Tasting	\$6,000	
B.C. Wine Tasting	\$6,000	
<b>ENHANCE JSM</b>		
JSM Conference Bags	\$30,000	\$16,000
Attendee Badge Lanyards	\$10,000	
JSM App & Mobile Program	\$10,000	
JSM WiFi	\$10,000	
JSM Cyber Center	\$10,000	\$5,000
ASA Professional Development	\$10,000	\$2,500 (per day)
JSM Speaker Management Kiosks	\$10,000	\$2,000
Conference Pen	\$6,000	
JSM Child Care *	\$5,000	\$2,500
EXPO Charging Stations	\$8,000	\$2,000
JSM Photo Booth	\$3,000	
JSM Luggage Storage	\$2,500	\$1,500 (per day)
<b>EVENTS</b>		
JSM Opening Mixer	\$10,000	\$5,000
JSM Dance Party	\$10,000	\$5,000
JSM Student Mixer	\$10,000	\$5,000
ASA Longtime Member Reception	\$7,000	\$3,500
JSM First-Time Attendee Orientation*	\$5,000	
ASA Awards & Editor Appreciation	\$5,000	
Student Chapter Workshop*	\$3,000	\$1,500

\*Indicates a new opportunity for 2018!

### RETURN THIS FORM TO:

**AMY FARRIS**

Director, Marketing and Membership Development

American Statistical Association

732 North Washington Street • Alexandria, VA 22314

Phone: (703) 684-1221 • Fax: (703) 684-3445

Email: [amy@amstat.org](mailto:amy@amstat.org)

# JSM2018 VANCOUVER

## ADVERTISER/EXHIBITOR COMMITMENT FORM

### ADVERTISING

#### QUICK GUIDE

- ☐ Quick Guide Cover.....\$2,500
- ☐ Quick Guide Full-Page .....\$1,500 (7" x 10")
- ☐ Quick Guide Half-Page .....\$950 (7" x 4 7/8")

**All artwork is 4-color and due by May 1, 2018.**

#### GENERAL

- ☐ Online Sidebar Ad.....\$850 for 30 days  
(250px x 100px)
- ☐ Attendee Mailing List.....\$800 +
- ☐ Conference Bag Insert .....\$2,000
- ☐ Digital Ad.....\$2,500  
(15-second advertisement)

### EXHIBITING

- ☐ 1st End Booth .....\$2,100
- ☐ 2nd End Booth.....\$2,000
- ☐ Additional End Booths .....\$1,900
- ☐ 1st In-Line Booth.....\$2,050
- ☐ 2nd In-Line Booth.....\$1,950
- ☐ Additional In-Line Booths ....\$1,800

My booth preferences are (refer to the exhibit hall floor plan to be posted at [www.amstat.org/jsmopportunities](http://www.amstat.org/jsmopportunities) under the Exhibit tab):

1st\_\_\_\_\_ 2nd\_\_\_\_\_ 3rd\_\_\_\_\_ 4th\_\_\_\_\_

- ☐ By checking this box, you acknowledge that exhibitors must be present at their booth the entire time the EXPO is open.

### SEND CONFIRMATION AND INFORMATION TO:

Name\_\_\_\_\_ Title\_\_\_\_\_

Company\_\_\_\_\_

Address\_\_\_\_\_

City\_\_\_\_\_ State\_\_\_\_\_

ZIP\_\_\_\_\_

Phone\_\_\_\_\_ Fax\_\_\_\_\_ Email\_\_\_\_\_

### PAYMENT

Total Amount Due:\_\_\_\_\_ Deposit:\_\_\_\_\_ (A deposit of \$1,000 per booth is required.)

- ☐ Check Enclosed ☐ American Express ☐ Discover ☐ MasterCard ☐ VISA

### BALANCE DUE MARCH 10, 2018

Card Number\_\_\_\_\_ Expiration\_\_\_\_\_

Name on Card\_\_\_\_\_ Security Code\_\_\_\_\_

Authorized Signature\_\_\_\_\_

Return this form to **Claudine Donovan, Advertising and Exhibits Manager**  
American Statistical Association • 732 North Washington Street • Alexandria, VA 22314-1943  
[claudine@amstat.org](mailto:claudine@amstat.org) • Phone: (703) 302-1847 • Fax: (703) 684-2036

## ADVERTISERS & EXHIBITORS

### CLAUDINE DONOVAN

Advertising and  
Exhibits Manager  
American Statistical  
Association  
732 North  
Washington Street  
Alexandria, VA 22314  
[claudine@amstat.org](mailto:claudine@amstat.org)

## SPONSORS & EMPLOYERS

### AMY FARRIS

Director, Marketing  
and Membership  
Development  
American Statistical  
Association  
732 North  
Washington Street  
Alexandria, VA 22314  
[amy@amstat.org](mailto:amy@amstat.org)

## EXHIBITOR/SPONSOR CANCELLATION POLICY

Exhibitor cancellations will be refunded prior to May 1, 2018, less 50% per booth. No refunds will be given after May 1, 2018. Cancellations must be submitted in writing to Exhibits Manager, Joint Statistical Meetings, 732 North Washington Street, Alexandria, VA 22314 or [claudine@amstat.org](mailto:claudine@amstat.org).

Sponsor opportunities are not refundable. On a case-by-case basis, sponsorship commitments may be transferred to other opportunities.

Career Service payments are nonrefundable once the recruiter has accessed the online service and posted jobs or reviewed candidates. Other recruiter cancellations will be refunded prior to June 1, 2018, less 50%. No refunds will be given after June 1, 2018.

## HOTEL RESERVATIONS

Information about JSM hotel reservations will be available at [www.amstat.org/jsm](http://www.amstat.org/jsm) on May 1, 2018, at 11:00 a.m. EDT. We encourage you to reserve early, as our housing block fills quickly.

## JSM MEETING REQUESTS

Interested in organizing a meeting, reception, or other event during JSM? We will begin accepting requests for event space beginning January 23, 2018.

**HAVE QUESTIONS?** Email [meetings@amstat.org](mailto:meetings@amstat.org).



# CURRENT SPONSORS

## PLATINUM



## SILVER

